

Schriefer Red Angus, McGee Red Angus and Spur M Red Angus present ...

LS M C 3-M
BEST of the WEST

Annual Production Sale
**WEDNESDAY,
FEBRUARY 26, 2014**

1 p.m. MST • Stockmen's Livestock
Dickinson, ND

Selling: **26** Registered Red Angus Open Heifers
125 Commercial Red Angus Open Heifers
20 2-Year-Old Red Angus Bulls
40 Yearling Red Angus Bulls

Commercial and Registered Heifers Sell First!

Power, Performance, Predictability
POWER, PERFORMANCE, PREDICTABILITY —





Welcome...

... to the "Best of the West" Red Angus Sale!

Schriefer, McGee and Spur M Red Angus have teamed up to bring you the Fifth Annual Best of the West Sale. We will be offering leading-edge Red Angus yearling bulls, 2-year-old bulls, registered and commercial heifers. Our team goal is to provide you with the best genetics possible so you can be profitable in today's competitive market.

By offering the best cattle from our three programs, you will be able to find something that will meet all of your needs, from calving ease to growth and performance. We believe it is important to develop a balance of traits that will work in any environment. With the unpredictable weather and markets, it has strengthened our belief that quality and consistency in a breeding program brings promising results.

Red Angus breeders are seeing a great demand for their breeding stock because of their efficient disposition, feedlot performance and carcass merit. This is the perfect time to add Red Angus breeding stock into your program.

We look forward to working with you and helping you with your bull and female needs. If you cannot attend the sale we can make bidding arrangements for you. If you have any questions or would like to take an early look, give us a call. We look forward to seeing you on February 26!

SPUR M RED ANGUS

Doug & Darcy McGee

701-523-3635 (home)

701-523-6086 (cell)

ddmcgee@ndsupernet.com

SCHRIEFER RED ANGUS

Marc & Jodi Schriefer

701-983-4292 (home) • 701-870-4292 (cell)

Riley & Cheyenne Schriefer

701-983-4289 (home)

marcjodi@westriv.com

www.schrieferredangus.com

MCGEE RED ANGUS

Meryl & Stacy McGee

701-279-5539 (home)

701-523-6995 (cell)

mcgeeredangus@ndsupernet.com

www.mcgeeredangus.com

Trust in the Lord and do good; dwell in the land and enjoy safe pasture. Ps.37:3.

Production Sale

BEST OF THE WEST

POWER, PERFORMANCE, PREDICTABILITY —

Power, Performance Predictability

RED ANGUS

Annual Production Sale

WEDNESDAY, FEBRUARY 26, 2014

1 p.m. MST • Stockmen's Livestock • Dickinson, ND

Sale Day Phone:

Stockmen's Livestock Exchange
1-800-472-2667 (ND, MT), 701-225-8156

Auctioneer:

Lynn Weishaar Home 605-866-4670
Cell 605-641-6278

Ringmen:

Scott Ressler,
ND Stockmen's Association Office 701-223-2522
Cell 701-391-7310

Jim Erickson,
Stockmen's Livestock Exchange Home 701-225-1610
Cell 701-290-4861

Accommodations in Dickinson, ND:

AmericInn 800-634-3444, 701-225-1400
Comfort Inn 800-228-5150, 701-264-7300
Super 8 Motel 800-800-8000, 701-227-1215
Days Inn 800-422-0949, 701-483-5600
Select Inn 800-641-1000, 701-227-1891

Delivery/Feeding:

We will "rebate" you \$100/bull if you haul your own home on Sale Day. We offer free delivery of bulls up to 250 miles from Dickinson to a central point. Bulls will be delivered as soon as possible unless other arrangements are made with the seller. The seller will not be responsible for injury or sickness of sale animals left in their care, but will keep the buyer informed. Heifers and their transport become buyers' responsibility at time of sale.

Cattle Registration:

All purebred animals are registered with the Red Angus Association of America (RAAA). Bulls are sold with transferable registrations. Registration papers on purebred heifers will transfer with a minimum purchase price of \$1,500/each.

Testing of Bulls:

2-year-old bulls will be semen tested prior to the sale. All bulls are sold as guaranteed breeders. Yearling bulls that are fed prior to delivery, will be semen tested or seller will rebate buyers the cost of semen testing for bulls taken home on sale day. If there is evidence that the bull is not a breeder, the buyer may obtain a statement signed by a licensed veterinarian indicating that there has been no injury or illness to the animal following the sale and return the bull to the seller for adjustment. Adjustments will be made by either substituting a bull of equal value, by refund of the full purchase price or credit towards the purchase of a bull.

Sale Terms and Conditions:

The sale will be conducted under the standard terms and conditions as recommended by the RAAA.

Sale Order:

Commercial Heifers, Registered Heifers, Bulls

Lunch:

Complimentary lunch will be served.

Catalog and Advertising:

Advertising and catalog designed by Cow Camp Promotions, Tracey Koester, www.cowcampromotions.com.
Catalog printed by Quality Quick Print, Dickinson, ND.



REFERENCE SIRE

A CBR BARN BOY 4340-7330 #1202506

BD	BW	WW	Cat.	%	Tattoos	Dam's Age	Dam's MPPA							
3/12/07	90	679	1A	100%	7330 CBR	3	98.6							
CED	BW	WW	YW	Milk	TM	ME	HPG	CEM	Stay	Marb	YG	CW	REA	Fat
5	1.2	71	101	5	41	3	11	6	10	-0.01	0.11	31	-0.01	-0.01
38%	86%	14%	26%	96%	73%	60%	42%	38%	48%	98%	77%	22%	68%	23%

BUF CRK BARNEY 3474
K BAR C BARN ONE 404
 LEACHMAN DINA 5919
 CBR SHOTGUN
CBR MISS KITTY 2346-4340
 CBR CHEIFTESS 2346-846

BUF CRK BARON 2678
 OLE SUNFLOWER 359 PB08
 FTF DOUBLE CHIEF N601
 PRF DINA P236
 SAMS PROSPECTOR 133Z
 CBR DYNAMIS 2322-561
 CFRA T3 CHIEF 9912
 TBS MS MAINSTREAM 846-H

B HRR LANCER 024 #1398239

BD	BW	WW	Cat.	%	Tattoos	Dam's Age	Dam's MPPA							
2/28/10	75	707	1A	100%	24 BCO	2	96.5							
CED	BW	WW	YW	Milk	TM	ME	HPG	CEM	Stay	Marb	YG	CW	REA	Fat
15	-5.0	57	79	17	45	0	9	7	11	0.41	-0.12	9	0.18	-0.03
1%	6%	44%	66%	64%	57%	33%	76%	22%	40%	51%	10%	78%	36%	5%

BECKTON LANCER F442 T
BUF CRK LANCER-F L297
 BUF CRK LASS 4158
 SHOCO DATA
HRR FREYJA 8101
 BJR MATTIE 074-361

BECKTON LANCER T A664
 BKT SUFFEINA A828 DM
 BUF CRK IOWA 2886
 BUF CRK LASS 1559
 SHOCO SIR ROBIN
 VDAR BLACKANA 303
 BJR YOGO 355-71L
 BJR MATTIE 881-774

C SMJ FULL THROTTLE AB X292 #1376848

BD	BW	WW	Cat.	%	Tattoos	Dam's Age	Dam's MPPA							
3/26/10	97	749	1A	100%	X292 SMJ	5	102							
CED	BW	WW	YW	Milk	TM	ME	HPG	CEM	Stay	Marb	YG	CW	REA	Fat
1	1.3	66	108	11	44	-4	2	5	10	0.45	0.20	36	-0.10	0.02
73%	91%	18%	12%	93%	66%	17%	99%	44%	55%	42%	98%	9%	86%	77%

RD TER-RON FULLY LOADED 540R
RED 6 MILE FULL THROTTLE 171T
 RED SIX MILE WITZEL 360J
 LCC ABOVE & BEYOND 1300J
SMJ A.B. DAY R290
 SMJ DAY RED LEE N294

RED HEARTLAND KNIGHT CHARM 1
 RED TER-RON GOLDIE 240L
 RED PASQUIA ARAB 28E
 RED C Y WITZEL 392Z
 LCHMAN.ABOVEHEAVEN1018F
 HXC 701G
 SCHR MAKE MY DAY 40L
 BELMORAL MISS LEE 40'00

D SMJ BUSTER RAMBO X256 #1376867

BD	BW	WW	Cat.	%	Tattoos	Dam's Age	Dam's MPPA							
3/30/10	79	715	1A	100%	X256 SMJ	2	99.5							
CED	BW	WW	YW	Milk	TM	ME	HPG	CEM	Stay	Marb	YG	CW	REA	Fat
12	-7.9	58	86	12	41	7	12	6	10	0.22	0.13	9	-0.20	0.01
5%	1%	41%	52%	91%	79%	87%	18%	32%	48%	88%	90%	78%	94%	61%

LCC HEAVEN OR BUST 1000B
HLH BUSTER 406 603
 HLH MS ARROW 908 406
 MLK CRK RAMBO 4145
SMJ RAMBO CC U256
 SMJ C CANYON RED LASS N295

LEACHMAN HEAVENLY 8141
 LMAN MARY 9003
 BUF CRK 877-1587
 HLH WENDI 214 908
 VDAR RAMBO 323
 MLK CRK LAKOTA 850
 BFCK CHEROKEE CNYN 4912
 BELMORAL LASS 69'00



SRR Super Conquest 03

E SRR SUPER CONQUEST 03 #1365841

BD	BW	WW	Cat.	%	Tattoos	Dam's Age	Dam's MPPA							
1/5/10	77	765	1A	100%	3 SNSN	2	107.1							
CED	BW	WW	YW	Milk	TM	ME	HPG	CEM	Stay	Marb	YG	CW	REA	Fat
11	-3.3	68	111	26	60	6	5	8	13	0.61	0.12	31	0.26	0.03
12%	25%	19%	14%	14%	5%	74%	95%	18%	16%	23%	79%	22%	30%	80%

BECKTON JULIAN GG B571
HXC CONQUEST 4405P
 HXC ELLIE MAY MA638
 BASIN SALUTE 5359
SRR DORY JIBA 815-5036
 SRR DORY JIBA 5036-930

BKT JULIAN 7526 G
 BKT MARTA 9A13 JL
 BFCK CHEROKEE CNYN 4912
 HXC 529E
 STEVENSON SALUTE
 BASIN DYNAMO 3016
 LCC MAJOR LEAGUE A502M
 LARSON DORY JIBA 930

We purchased this bull from Strawberry Ridge Red Angus in 2011. We are very proud of this bull and have very high expectations for him. He has all of the characteristics you would want to see: calving ease, growth and EPDs. He is a bull with a lot of length and natural thickness, and very structurally sound. One of his sons was the high-selling bull for Spur M Red Angus in the 2012 sale, selling to Delvin Dukart of Manning, ND.

Average EPDs for Proven and Opportunity Sires

CED	BW	WW	YW	Milk	TM	ME	HPG	CEM	Stay	Marb	YG	CW	REA	Fat
5	-1.6	55	86	18	45	1	10	5	10	0.45	0.01	19	0.12	0.00

Average EPDs for Non-Parents (under 2 years of age)

CED	BW	WW	YW	Milk	TM	ME	HPG	CEM	Stay	Marb	YG	CW	REA	Fat
4	-1.0	56	83	20	48	1	10	5	11	0.43	-0.01	19	0.15	0.00

REFERENCE SIRES



Messmer Packer S008

7 MESSMER PACKER S008 #1109534

BD	BW	WW	Cat.	%	Tattoos	Dam's Age	Dam's MPPA							
2/12/06	85	762	1A	100%	S008 2MS	2	101.8							
CED	BW	WW	YW	Milk	TM	ME	HPG	CEM	Stay	Marb	YG	CW	REA	Fat
5	-2.9	69	111	5	40	-6	14	7	16	0.60	-0.11	32	0.82	0.01
38%	29%	17%	15%	96%	77%	15%	9%	24%	6%	24%	12%	21%	2%	54%

BECKTON JULIAN GG B571
MESSMER JOSHUA 019P
 MESSMER PANDORA M186
 VGW TOP PICK 130
MESSMER MILLIE 124P
 MESSMER MILLIE 9416

BKT JULIAN 7526 G
 BKT MARTA 9A13 JL
 LELAND MARIAS 271K
 MESSMER PANDORA 9976
 NEO-SHO MILLENIUM 065G
 VGW KURUBA-RAM 9308
 BUF CRK CHF 824-1658
 NODAKLADY POUNDMAKER

What do you say about one of the best bulls in the Red Angus business? This is the last year for this herd sire, as you will no longer be able to get semen from him. You will see when you come to the sale that his sons are tremendous bulls. You cannot go wrong buying a Packer son.



LSF NSF Big Time U203

9 LSF NSF BIG TIME U203 #1239355

BD	BW	WW	Cat.	%	Tattoos	Dam's Age	Dam's MPPA							
3/12/08	66	779	1A	100%	U203 NSF	6	101.4							
CED	BW	WW	YW	Milk	TM	ME	HPG	CEM	Stay	Marb	YG	CW	REA	Fat
-3	-0.8	80	127	14	54	7	14	0	7	-0.05	0.07	44	0.28	-0.01
90%	61%	5%	4%	75%	17%	84%	12%	85%	78%	98%	65%	6%	28%	23%

LSF CANYON CLASSIC 3037N
LSF MEW TRES TIEMPO 511S
 LSF RACHEL LA409
 NEO-SHO CATALYST K593
MS NEO-SHO CATALYST M177
 MS NSF PLAYBOY'S GOLD F620

BFCK CHEROKEE CNYN 4912
 LSF LOGAN H1375 LA414
 GLACIER MARIAS 548
 PARK MISS ROBIN F651
 LMAN KING O MAT 1534D
 MS NEO-SHO KING D420
 DFR PLAYBOY'S GOLD 32AA
 MS NEO-SHO UPRIGHT C546

If you are looking for growth bulls, his sons will be the ones you are looking for. He seems to add length and natural thickness to his offspring. If you are looking to add pounds to your calves, look at the sons from this herd sire.



5L Ben North 1102-6627

H 5L BEN NORTH 1102-6627 #1187511

BD	BW	WW	Cat.	%	Tattoos	Dam's Age	Dam's MPPA							
2/6/07	86	732	1A	100%	6627 FLR	5	98.6							
CED	BW	WW	YW	Milk	TM	ME	HPG	CEM	Stay	Marb	YG	CW	REA	Fat
-1	1.9	58	103	18	47	3	12	1	9	0.71	0.01	35	0.31	0.00
84%	91%	44%	24%	51%	44%	55%	26%	81%	56%	74%	46%	16%	25%	39%

5L NORSEMAN KING 2291
5L SIGNATURE 5615
 5L RUBY 199-01
 5L BLACK BEN 15-898
5L ROXIE X854-1102
 XXX ROXIE 854 MR

VGW KING OF THE WEST
 NORSEMAN 1312 PJM
 LCHMN GRANDCANYON 1244G
 5L MISS BURKE 72-199
 RR BENTLEY 779F
 5L COUNTESS 53-15
 XXX SUN FIRE 3136 HC
 XXX ROXIE 040 MR

This bull was purchased from 5L Red Angus in 2008. This will be the last set of bulls directly out of him. We have sold a lot of his sons and daughters throughout the last several years. We have a number of his daughters in production and could not be prouder of them. Whenever anyone comes to look at cattle, I make it a point to show them off.



PIE Code Red 9058, grandsire

? BHR CODE RED 190 #1454200

BD	BW	WW	Cat.	%	Tattoos	Dam's Age	Dam's MPPA							
4/4/11	87	766	1A	100%	190 BHR	5	104.9							
CED	BW	WW	YW	Milk	TM	ME	HPG	CEM	Stay	Marb	YG	CW	REA	Fat
1	-1.5	67	104	23	57	5	13	2	15	0.32	0.03	29	0.13	0.00
73%	45%	14%	17%	19%	5%	75%	7%	78%	4%	71%	59%	21%	43%	44%

VGW GAME PLAN 508
PIE CODE RED 9058
 PIE STORMY 541
 LCC NEW CHAPTER A705L
MISS BHR CHAPTER ONE 681
 MISS BHR STRETCH 205

LCC IMF B054M
 VGW PT- DORY 0361
 LCB HOSS A444N
 PIE STORMY BEEFMAKER 327
 BFCK CHEROKEE CNYN 4912
 MISS LL ROB LOW 929
 VGW STRETCH 974
 MISS BHR T-HEART 914H

REFERENCE SIRES



LSF High Yield 8088U

J LSF HIGH YIELD 8088U #1248523

BD	BW	WW	Cat.	%	Tattoos	Dam's Age	Dam's MPPA							
2/6/08	80	711	1A	100%	8088U PARK	3	95.6							
CE	BW	WW	YW	Milk	TM	ME	HPG	CEM	Stay	Marb	YG	CW	REA	Fat
2	-3.2	52	82	14	40	8	14	7	18	0.78	-0.08	14	0.20	-0.03
63%	27%	59%	58%	73%	75%	84%	11%	24%	1%	10%	19%	62%	37%	6%

MESSMER JOSHUA 019P
MESSMER PACKER S008
 MESSMER MILLIE 124P
 BROWN VACATION H7106
LSF COVER GIRL K1426 R5057
 LSF COVER GIRL K1426

BECKTON JULIAN GG B571
 MESSMER PANDORA M186
 VGW TOP PICK 130
 MESSMER MILLIE 9416
 BECKTON JULIAN GG B571
 LCHMN FLOWER C1161
 LEACHMAN COWBOSS 1129G
 LSF CLASSIC H1375

This will be the last year there will be any bulls out of this sire. We have been very pleased with his offspring. We have used him extensively in our own AI program. The one thing we have noticed with this bull is that his calves are very uniform in size and structure. He produces extremely nice calves all around.



Koester Yield 023

K KOESTER YIELD 023 #1415934

BD	BW	WW	Cat.	%	Tattoos	Dam's Age	Dam's MPPA							
9/17/10	68	696	1A	100%	23 KAR	2	100							
CE	BW	WW	YW	Milk	TM	ME	HPG	CEM	Stay	Marb	YG	CW	REA	Fat
4	-3.5	56	86	16	45	8	10	6	12	0.57	-0.16	15	0.15	-0.05
43%	16%	47%	52%	66%	60%	91%	53%	32%	30%	21%	5%	62%	40%	1%

MESSMER PACKER S008
LSF HIGH YIELD 8088U
 LSF COVER GIRL K1426 R5057

MESSMER JOSHUA 019P
 MESSMER MILLIE 124P
 BROWN VACATION H7106
 LSF COVER GIRL K1426

LJC JAVELIN M08
JACOBSON RITA 8031
 BT TOP RITA O 07

BECKTON LANCER F442 T
 LJC LOGAN E56 945
 LORENZEN TOP CUT 8355
 RED RACHEL 0221K

The yearling bulls will have carcass ultrasound data available on sale day.

The breeders retain the right to a one-third semen interest on any bulls they offer in the sale.



SPUR M RED ANGUS

Greetings from southwest North Dakota! Spur M Red Angus would like to welcome you to our Fifth Annual Bull and Heifer Sale at Stockmen's Livestock in Dickinson, N.D. Prior to having an annual production sale our bulls were sold by private treaty. We have a lot of bulls in the country with many satisfied and repeat buyers.

The cattle are raised on dry grass and mother's milk throughout the summer. When they are weaned, they are put on a bull developer to gain an average of 3 pounds per day.

We follow an extensive AI program using some of the best bulls available. The cattle are turned out with top bulls such as 5L Ben North and SRR Super Conquest for cleanup.

At Spur M Red Angus, we do not concentrate on just one trait. We strive for a very well-balanced set of traits, which include birth weight, weaning weight, length, thickness, structure and soundness. We like calves that are born with ease and grow once they are on the ground.

There are not individual footnotes on any of our bulls in the catalog. The most important thing to know is that there is a Spur M Red Angus bull in the sale to cover any need you may be looking for, from calving ease to growth. Please feel free to call or e-mail us with any questions you may have concerning any of the bulls.

We have a very nice offering of bulls and heifers this year and are sure you will be pleased as well. We look forward to seeing you at the sale!

Spur M Red Angus, Doug and Darcy McGee

701-523-3635 (home), 701-523-6086 (cell)
ddmcgee@ndsupernet.com



Bailey, Doug, Darcy and Kyle McGee



Lot 1



Lot 2

1 SPR KING CONQUEST 3001 #1618900

BD	BW	WW	Cat.	%	Tattoos	Dam's Age	Dam's MPPA							
2/17/13	85	642	1A	100%	3001 DM	2	101.2							
CED	BW	WW	YW	Milk	TM	ME	HPG	CEM	Stay	Marb	YG	CW	REA	Fat
4	-2.2	61	95	22	53	5	8	4	14	0.62	0.00	23	0.16	0.00
46%	31%	27%	28%	22%	14%	81%	83%	58%	9%	14%	46%	36%	42%	43%

HXC CONQUEST 4405P
SRR SUPER CONQUEST 03
SRR DORY JIBA 815-5036

LSF HIGH YIELD 8088U
SPR MISS YIELDING 1004
SPR MISS TRENDY 9008

BECKTON JULIAN GG B571
HXC ELLIE MAY MA638
BASIN SALUTE 5359
SRR DORY JIBA 5036-930
MESSMER PACKER S008
LSF COVER GIRL K1426 R5057
BASIN TREND SETTER 6074
MER 341

2 SPR MR CONQUEST 3003 #1618901

BD	BW	WW	Cat.	%	Tattoos	Dam's Age	Dam's MPPA							
2/18/13	77	633	1A	100%	3003 DM	2	100.8							
CED	BW	WW	YW	Milk	TM	ME	HPG	CEM	Stay	Marb	YG	CW	REA	Fat
9	-3.1	61	97	21	52	6	9	8	15	0.65	0.01	23	0.17	0.00
11%	19%	28%	26%	26%	16%	87%	75%	10%	6%	12%	51%	37%	40%	43%

HXC CONQUEST 4405P
SRR SUPER CONQUEST 03
SRR DORY JIBA 815-5036

LSF HIGH YIELD 8088U
SPR MISS SLOW DOWN 1005
SPR SETMEDOWN 9014

BECKTON JULIAN GG B571
HXC ELLIE MAY MA638
BASIN SALUTE 5359
SRR DORY JIBA 5036-930
MESSMER PACKER S008
LSF COVER GIRL K1426 R5057
BASIN TREND SETTER 6074
BAILEYS COMBINATION 6033

YEARLING BULLS

Spur M Red Angus

3 SPR QUESTION MARK 3006 #1618898

BD	BW	WW	Cat.	%	Tattoos	Dam's Age	Dam's MPPA							
2/22/13	81	569	1A	100%	3006 DM	2	96.4							
CED	BW	WW	YW	Milk	TM	ME	HPG	CEM	Stay	Marb	YG	CW	REA	Fat
4	-2.0	65	105	16	48	2	9	4	14	0.59	0.01	29	0.30	0.01
46%	35%	16%	13%	73%	35%	58%	71%	58%	9%	18%	51%	19%	20%	61%

HXC CONQUEST 4405P
SRR SUPER CONQUEST 03
 SRR DORY JIBA 815-5036
 MESSMER PACKER S008
SPR MISS PACKMAN 1014
 SPUR M FLAMER 8009

BECKTON JULIAN GG B571
 HXC ELLIE MAY MA638
 BASIN SALUTE 5359
 SRR DORY JIBA 5036-930
 MESSMER JOSHUA 019P
 MESSMER MILLIE 124P
 CBR FLAME 924-47
 SPUR COMBINATION 5008



Lot 5

4 SPR SUPER CONQUEST 3008 #1618904

BD	BW	WW	Cat.	%	Tattoos	Dam's Age	Dam's MPPA							
2/23/13	87	646	1A	100%	3008 DM	2	101.6							
CED	BW	WW	YW	Milk	TM	ME	HPG	CEM	Stay	Marb	YG	CW	REA	Fat
6	-1.2	65	105	20	52	8	7	6	15	0.38	0.04	30	0.10	-0.01
28%	49%	16%	13%	39%	15%	95%	95%	28%	8%	59%	64%	16%	54%	22%

HXC CONQUEST 4405P
SRR SUPER CONQUEST 03
 SRR DORY JIBA 815-5036
 BJR MONU 4X-303
SPR MISS 4X 1036
 MCGEE TAMI 120

BECKTON JULIAN GG B571
 HXC ELLIE MAY MA638
 BASIN SALUTE 5359
 SRR DORY JIBA 5036-930
 RED SSS MONU4X 237C
 RCRA SAMANTHA
 GLACIER CHATEAU 744
 LMG TAMEY 728

5 SPR KING PACKER 3009 #1618882

BD	BW	WW	Cat.	%	Tattoos	Dam's Age	Dam's MPPA							
2/23/13	87	674	1A	100%	3009 DM	3	100.6							
CED	BW	WW	YW	Milk	TM	ME	HPG	CEM	Stay	Marb	YG	CW	REA	Fat
1	-1.1	65	107	10	42	0	14	6	13	0.59	-0.04	32	0.50	0.01
77%	51%	16%	10%	97%	73%	39%	4%	28%	23%	18%	29%	13%	6%	61%

MESSMER JOSHUA 019P
MESSMER PACKER S008
 MESSMER MILLIE 124P
 5L BEN NORTH 1102-6627
SPR MISS NORTHERN LIGHT 0040
 BAILEYS COMBINATION 6033

BECKTON JULIAN GG B571
 MESSMER PANDORA M186
 VGW TOP PICK 130
 MESSMER MILLIE 9416
 5L SIGNATURE 5615
 5L ROXIE X854-1102
 LSF COMBINATION A301M
 MCGEE VANNA 002

6 SPR CONSTELLATION 3010 #1618906

BD	BW	WW	Cat.	%	Tattoos	Dam's Age	Dam's MPPA							
2/23/13	78	626	1A	100%	3010 DM	2	100							
CED	BW	WW	YW	Milk	TM	ME	HPG	CEM	Stay	Marb	YG	CW	REA	Fat
8	-1.8	63	100	20	52	1	8	8	15	0.57	0.00	26	0.26	0.00
15%	38%	21%	20%	34%	16%	50%	85%	10%	7%	20%	46%	26%	25%	43%

HXC CONQUEST 4405P
SRR SUPER CONQUEST 03
 SRR DORY JIBA 815-5036
 MESSMER PACKER S008
SPR MISS PACKAGE 1026
 SIXE MS BOEING 335

BECKTON JULIAN GG B571
 HXC ELLIE MAY MA638
 BASIN SALUTE 5359
 SRR DORY JIBA 5036-930
 MESSMER JOSHUA 019P
 MESSMER MILLIE 124P
 SIXL BOEING 747
 SIXL MS EMULOUS



Lot 8

7 SPR KING VICK 3019 #1618866

BD	BW	WW	Cat.	%	Tattoos	Dam's Age	Dam's MPPA							
3/8/13	81	629	1A	100%	3019 DM	4	100							
CED	BW	WW	YW	Milk	TM	ME	HPG	CEM	Stay	Marb	YG	CW	REA	Fat
6	-3.7	55	87	15	43	-2	12	9	15	0.57	-0.11	16	0.40	0.00
28%	13%	49%	47%	77%	69%	25%	13%	5%	5%	20%	11%	60%	11%	43%

MESSMER JOSHUA 019P
MESSMER PACKER S008
 MESSMER MILLIE 124P
 BASIN TREND SETTER 6074
SPR MISS TRENDY 9006
 MER MS LOGAN 800

BECKTON JULIAN GG B571
 MESSMER PANDORA M186
 VGW TOP PICK 130
 MESSMER MILLIE 9416
 RED BRYLOR NEW TREND 22
 BASIN ROSE F521
 GLACIER LOGAN 210
 MER VANNA 301

8 SPR UPS PACKAGE 3020 #1618875

BD	BW	WW	Cat.	%	Tattoos	Dam's Age	Dam's MPPA							
3/8/13	95	714	1A	100%	3020 DM	4	105.3							
CED	BW	WW	YW	Milk	TM	ME	HPG	CEM	Stay	Marb	YG	CW	REA	Fat
-2	0.2	72	114	12	48	0	12	6	13	0.53	0.03	38	0.34	0.01
95%	77%	5%	5%	92%	36%	37%	11%	28%	24%	26%	60%	5%	16%	61%

MESSMER JOSHUA 019P
MESSMER PACKER S008
 MESSMER MILLIE 124P
 WEBR DOC HOLLIDAY 2N
SPR MISS HOLIDAY 9012
 SPR FLAMETHROWER 6038

BECKTON JULIAN GG B571
 MESSMER PANDORA M186
 VGW TOP PICK 130
 MESSMER MILLIE 9416
 MLK CRK CUB 722
 WEBR MS DOLLY 1L
 CBR FLAME 924-47
 MCGEE TAMI 120

Spur M Red Angus

YEARLING BULLS



Lot 9

9 SPR KING VIKING 3025

#1618874

BD	BW	WW	Cat.	%	Tattoos	Dam's Age	Dam's MPPA							
3/11/13	75	673	1A	100%	3025 DM	4	103.3							
CED	BW	WW	YW	Milk	TM	ME	HPG	CEM	Stay	Marb	YG	CW	REA	Fat
5	-3.1	62	98	13	45	0	13	8	14	0.55	-0.05	23	0.43	0.01
36%	19%	24%	23%	87%	59%	39%	7%	10%	12%	23%	25%	35%	9%	61%

MESSMER JOSHUA 019P
MESSMER PACKER S008
 MESSMER MILLIE 124P
 BASIN TREND SETTER 6074
SPR SETMEDOWN 9014
 BAILEYS COMBINATION 6033

BECKTON JULIAN GG B571
 MESSMER PANDORA M186
 VGW TOP PICK 130
 MESSMER MILLIE 9416
 RED BRYLOR NEW TREND 22
 BASIN ROSE F521
 LSF COMBINATION A301M
 MCGEE VANNA 002



Kyle riding bulls

10 SPR AARON ROGERS 3033

#1618873

BD	BW	WW	Cat.	%	Tattoos	Dam's Age	Dam's MPPA							
3/4/13	78	631	1A	100%	3033 DM	4	98.3							
CED	BW	WW	YW	Milk	TM	ME	HPG	CEM	Stay	Marb	YG	CW	REA	Fat
5	-2.6	56	93	16	44	-1	13	6	13	0.58	-0.07	22	0.42	0.00
36%	25%	45%	32%	75%	65%	32%	9%	28%	26%	19%	19%	40%	10%	43%

MESSMER JOSHUA 019P
MESSMER PACKER S008
 MESSMER MILLIE 124P
 5L BEN NORTH 1102-6627
SPR MISS BENNY 9030
 MISS SPR 6041

BECKTON JULIAN GG B571
 MESSMER PANDORA M186
 VGW TOP PICK 130
 MESSMER MILLIE 9416
 5L SIGNATURE 5615
 5L ROXIE X854-1102
 CBR FLAME 924-47
 MER MS ON TARGET 804



Lot 11

11 SPR TIMELINE 3034

#1618849

BD	BW	WW	Cat.	%	Tattoos	Dam's Age	Dam's MPPA							
3/14/13	86	699	1A	100%	3034 DM	7	106.5							
CED	BW	WW	YW	Milk	TM	ME	HPG	CEM	Stay	Marb	YG	CW	REA	Fat
1	-1.4	65	102	19	51	5	12	4	11	0.08	-0.03	28	0.15	-0.02
77%	45%	17%	17%	51%	20%	78%	16%	58%	49%	96%	33%	21%	44%	12%

LSF MEW TRES TIEMPO 511S
LSF NSF BIG TIME U203
 MS NEO-SHO CATALYST M177
 CBR FLAME 924-47
MISS SPR FLAME 6036
 MCGEE MS HUSKER 214

LSF CANYON CLASSIC 3037N
 LSF RACHEL LA409
 NEO-SHO CATALYST K593
 MS NSF PLAYBOY'S GOLD F620
 HLG 0601 276
 CBR DYNAMIS 924-436
 GLACIER CHATEAU 744
 MER MISS HUSKER 600



HXC Conquest 4405P, grandsire

12 SPR CHAPARAL 3036

#1618886

BD	BW	WW	Cat.	%	Tattoos	Dam's Age	Dam's MPPA							
3/14/13	80	670	1A	100%	3036 DM	3	98.6							
CED	BW	WW	YW	Milk	TM	ME	HPG	CEM	Stay	Marb	YG	CW	REA	Fat
6	-3.2	60	94	18	48	6	9	4	11	0.53	0.01	21	0.17	0.01
28%	18%	31%	30%	60%	40%	84%	80%	58%	44%	26%	51%	43%	40%	61%

HXC CONQUEST 4405P
SRR SUPER CONQUEST 03
 SRR DORY JIBA 815-5036
 SPUR COMBO PACK 5006
SPR MISS SIXPACK 0033
 SPUR M FLAMER 8016

BECKTON JULIAN GG B571
 HXC ELLIE MAY MA638
 BASIN SALUTE 5359
 SRR DORY JIBA 5036-930
 LSF COMBINATION A301M
 MCGEE MS CHATEAU 025
 CBR FLAME 924-47
 MCGEE VANNA 404

YEARLING BULLS

Spur M Red Angus



Lot 13

13 SPR PACKING MATERIAL 3040

#1618915

BD	BW	WW	Cat.	%	Tattoos	Dam's Age	Dam's MPPA							
3/16/13	92	648	1A	100%	3040 DM	10	101.3							
CED	BW	WW	YW	Milk	TM	ME	HPG	CEM	Stay	Marb	YG	CW	REA	Fat
0	-1.2	54	81	13	40	-3	12	4	11	0.42	-0.10	16	0.44	0.01
85%	49%	53%	61%	87%	81%	21%	18%	58%	50%	49%	13%	60%	9%	61%

MESSMER JOSHUA 019P
MESSMER PACKER S008
 MESSMER MILLIE 124P
 PIE BODIDLY II 902
MER 341
 MER 610

BECKTON JULIAN GG B571
 MESSMER PANDORA M186
 VGW TOP PICK 130
 MESSMER MILLIE 9416
 TKP BODACIOUS 693
 NBAR SATIN
 LELAND JOSIE 642A
 LMG VELMA 699

14 SPR SLOW DOWN 3042

#1618838

BD	BW	WW	Cat.	%	Tattoos	Dam's Age	Dam's MPPA							
3/18/13	92	621	1A	100%	3042 DM	8	101.7							
CED	BW	WW	YW	Milk	TM	ME	HPG	CEM	Stay	Marb	YG	CW	REA	Fat
-1	-2.5	43	66	16	37	3	13	5	10	0.59	-0.08	5	0.01	-0.03
90%	27%	86%	86%	75%	91%	67%	8%	42%	55%	18%	17%	86%	72%	7%

MESSMER PACKER S008
LSF HIGH YIELD 8088U
 LSF COVER GIRL K1426 R5057
 PIE BODIDLY II 902
MISS SPUR DIDLY 5032
 MCGEE MS 4 TIMES 307

MESSMER JOSHUA 019P
 MESSMER MILLIE 124P
 BROWN VACATION H7106
 LSF COVER GIRL K1426
 TKP BODACIOUS 693
 NBAR SATIN
 HOLDEN HIGHLIGHT 807
 EZB MS 4 TIMES 603

15 SPR TIMKIN 3043

#1618850

BD	BW	WW	Cat.	%	Tattoos	Dam's Age	Dam's MPPA							
3/19/13	102	654	1A	100%	3043 DM	6	95.7							
CED	BW	WW	YW	Milk	TM	ME	HPG	CEM	Stay	Marb	YG	CW	REA	Fat
-2	1.1	68	106	14	48	4	12	2	9	0.13	0.02	35	0.09	-0.02
95%	89%	10%	11%	83%	34%	72%	17%	82%	69%	95%	55%	9%	56%	12%

LSF MEW TRES TIEMPO 511S
LSF NSF BIG TIME U203
 MS NEO-SHO CATALYST M177
 CBR FLAME 924-47
MISS SPUR FLAMER 7030
 MER MISS BULLSEYE 914

LSF CANYON CLASSIC 3037N
 LSF RACHEL LA409
 NEO-SHO CATALYST K593
 MS NSF PLAYBOY'S GOLD F620
 HLG 0601 276
 CBR DYNAMIS 924-436
 LCHMN ON TARGET 1016E
 MER 314



5L Norseman King 2291, grandsire

16 SPR CONQUISTADOR 3044

#1618890

BD	BW	WW	Cat.	%	Tattoos	Dam's Age	Dam's MPPA							
3/19/13	85	660	1A	100%	3044 DM	3	102.9							
CED	BW	WW	YW	Milk	TM	ME	HPG	CEM	Stay	Marb	YG	CW	REA	Fat
5	-0.9	61	96	23	53	2	6	2	13	0.48	-0.04	26	0.38	0.01
36%	55%	27%	26%	17%	11%	56%	96%	82%	26%	36%	29%	28%	13%	61%

HXC CONQUEST 4405P
SRR SUPER CONQUEST 03
 SRR DORY JIBA 815-5036
 5L NORSEMAN KING 2291
SPR MISS NORSEMAN QUEEN 0009
 MER 341

BECKTON JULIAN GG B571
 HXC ELLIE MAY MA638
 BASIN SALUTE 5359
 SRR DORY JIBA 5036-930
 VGW KING OF THE WEST
 NORSEMAN 1312 PJM
 PIE BODIDLY II 902
 MER 610



Lot 17

17 SPR FAJITA 3046

#1618846

BD	BW	WW	Cat.	%	Tattoos	Dam's Age	Dam's MPPA							
3/21/13	91	721	1A	100%	3046 DM	7	99.7							
CED	BW	WW	YW	Milk	TM	ME	HPG	CEM	Stay	Marb	YG	CW	REA	Fat
-3	-0.3	75	119	9	47	8	14	5	10	0.11	0.03	40	0.24	-0.01
97%	68%	3%	3%	98%	46%	94%	3%	42%	58%	95%	60%	4%	28%	22%

LSF MEW TRES TIEMPO 511S
LSF NSF BIG TIME U203
 MS NEO-SHO CATALYST M177
 LSF COMBINATION A301M
BAILEYS COMBINATION 6033
 MCGEE VANNA 002

LSF CANYON CLASSIC 3037N
 LSF RACHEL LA409
 NEO-SHO CATALYST K593
 MS NSF PLAYBOY'S GOLD F620
 LCHMN TOP BRASS 1049H
 WHF LASS 27G-29J
 MCGEE BULLS-EYE 806
 MER MS LOGAN 800

Spur M Red Angus

YEARLING BULLS



Lot 18

18 SPR BEN & JERRY 3047

#1618857

BD	BW	WW	Cat.	%	Tattoos	Dam's Age	Dam's MPPA							
3/22/13	91	656	1A	100%	3047 DM	5	101.8							
CED	BW	WW	YW	Milk	TM	ME	HPG	CEM	Stay	Marb	YG	CW	REA	Fat
2	-0.6	53	94	21	48	6	13	6	11	0.50	0.05	26	0.14	0.01
67%	62%	57%	31%	28%	39%	87%	6%	28%	47%	32%	69%	28%	46%	61%

5L SIGNATURE 5615
5L BEN NORTH 1102-6627
 5L ROXIE X854-1102
 NEO-SHO MILLENIUM 065G
SPUR M MILLENIUM 8017
 MCGEE MS HUSKER 214

5L NORSEMAN KING 2291
 5L RUBY 199-01
 5L BLACK BEN 15-898
 XXX ROXIE 854 MR
 LCHMN HIGH YIELD 1802C
 MS NEO-SHO 2131 C302
 GLACIER CHATEAU 744
 MER MISS HUSKER 600

19 SPR VIKING 3051

#1618847

BD	BW	WW	Cat.	%	Tattoos	Dam's Age	Dam's MPPA							
3/25/13	95	673	2	100%	3051 DM	7	105.3							
CED	BW	WW	YW	Milk	TM	ME	HPG	CEM	Stay	Marb	YG	CW	REA	Fat
1	-0.6	63	100	14	45	-2	12	5	12	0.50	-0.05	29	0.38	0.00
77%	62%	22%	19%	87%	57%	29%	14%	42%	28%	32%	25%	20%	13%	43%

MESSMER JOSHUA 019P
MESSMER PACKER S008
 MESSMER MILLIE 124P
 CBR FLAME 924-47
SPR FLAMETHROWER 6038
 MCGEE TAMI 120

BECKTON JULIAN GG B571
 MESSMER PANDORA M186
 VGW TOP PICK 130
 MESSMER MILLIE 9416
 HLG 0601 276
 CBR DYNAMIS 924-436
 GLACIER CHATEAU 744
 LMG TAMEY 728

20 SPR SUPER QUEST 3052

#1618889

BD	BW	WW	Cat.	%	Tattoos	Dam's Age	Dam's MPPA							
3/26/13	82	646	1A	100%	3052 DM	3	100.6							
CED	BW	WW	YW	Milk	TM	ME	HPG	CEM	Stay	Marb	YG	CW	REA	Fat
7	-2.5	65	108	22	54	5	8	6	16	0.52	-0.03	30	0.39	0.00
21%	27%	17%	10%	24%	9%	82%	85%	28%	3%	28%	33%	16%	12%	43%

HXC CONQUEST 4405P
SRR SUPER CONQUEST 03
 SRR DORY JIBA 815-5036
 LJC MISSION STATEMENT P27
SPR MISS STATEMENT 0020
 MCGEE VANNA 002

BECKTON JULIAN GG B571
 HXC ELLIE MAY MA638
 BASIN SALUTE 5359
 SRR DORY JIBA 5036-930
 LJC LANCER 806
 LJC HANNAH 106
 MCGEE BULLS-EYE 806
 MER MS LOGAN 800



5L Signature 5615, grandsire

21 SPR BEN NORTH 3054

#1618844

BD	BW	WW	Cat.	%	Tattoos	Dam's Age	Dam's MPPA							
3/27/13	80	637	1A	100%	3054 DM	7	100.9							
CED	BW	WW	YW	Milk	TM	ME	HPG	CEM	Stay	Marb	YG	CW	REA	Fat
2	0.1	57	93	17	45	1	11	1	11	0.59	-0.03	26	0.23	-0.01
67%	75%	43%	33%	64%	54%	50%	36%	90%	53%	18%	33%	28%	30%	22%

5L SIGNATURE 5615
5L BEN NORTH 1102-6627
 5L ROXIE X854-1102
 CBR FLAME 924-47
MISS SPR FLAME 6035
 MCGEE JORICA 401

5L NORSEMAN KING 2291
 5L RUBY 199-01
 5L BLACK BEN 15-898
 XXX ROXIE 854 MR
 HLG 0601 276
 CBR DYNAMIS 924-436
 BFCK CHEROKEE CNYN 4912
 MCGEE JORKA 231



Lot 22

22 SPR HIGHWAY TWELVE 3056

#1618840

BD	BW	WW	Cat.	%	Tattoos	Dam's Age	Dam's MPPA							
3/28/13	96	660	1A	100%	3056 DM	8	101.7							
CED	BW	WW	YW	Milk	TM	ME	HPG	CEM	Stay	Marb	YG	CW	REA	Fat
-1	1.0	60	92	12	42	5	10	6	12	0.55	-0.01	26	0.07	-0.02
90%	88%	31%	35%	92%	74%	80%	44%	28%	29%	23%	41%	27%	60%	12%

MESSMER PACKER S008
LSF HIGH YIELD 8088U
 LSF COVER GIRL K1426 R5057
 MCGEE BULLS-EYE 806
MISS BAILEY'S PET 5022
 EZB MISS KAY 716

MESSMER JOSHUA 019P
 MESSMER MILLIE 124P
 BROWN VACATION H7106
 LSF COVER GIRL K1426
 LCHMN ON TARGET 1016E
 MER 315
 STRAKAS DILLON 5039
 EZB MISS KAY 419

YEARLING BULLS

Spur M Red Angus

23 SPR PACKMAN 3061

#1618855

BD	BW	WW	Cat.	%	Tattoos	Dam's Age	Dam's MPPA							
3/30/13	98	737	1A	100%	3061 DM	6	107.4							
CED	BW	WW	YW	Milk	TM	ME	HPG	CEM	Stay	Marb	YG	CW	REA	Fat
-3	-0.3	71	112	6	42	2	15	6	10	0.52	0.03	36	0.36	0.01
97%	68%	6%	6%	99%	76%	55%	2%	28%	57%	28%	60%	8%	14%	61%

MESSMER JOSHUA 019P
MESSMER PACKER S008
 MESSMER MILLIE 124P
 LSF COMBINATION A301M
MISS SPUR COMBINATION 7011
 MCGEE TANNA 420

BECKTON JULIAN GG B571
 MESSMER PANDORA M186
 VGW TOP PICK 130
 MESSMER MILLIE 9416
 LCHMN TOP BRASS 1049H
 WHF LASS 27G-29J
 PIE BODIDLY II 902
 MER MS ON TARGET 804

24 SPR MR. BEN 3065

#1618852

BD	BW	WW	Cat.	%	Tattoos	Dam's Age	Dam's MPPA							
4/2/13	85	656	2	100%	3065 DM	6	101.1							
CED	BW	WW	YW	Milk	TM	ME	HPG	CEM	Stay	Marb	YG	CW	REA	Fat
3	-1.9	47	79	22	45	2	11	4	10	0.57	-0.04	15	0.15	0.00
57%	36%	78%	64%	21%	54%	57%	37%	58%	60%	20%	29%	63%	44%	43%

5L SIGNATURE 5615
5L BEN NORTH 1102-6627
 5L ROXIE X854-1102
 CBR FLAME 924-47
MISS SPUR FLAME 7026
 MCGEE MS HUSKER 214

5L NORSEMAN KING 2291
 5L RUBY 199-01
 5L BLACK BEN 15-898
 XXX ROXIE 854 MR
 HLG 0601 276
 CBR DYNAMIS 924-436
 GLACIER CHATEAU 744
 MER MISS HUSKER 600



Lot 25

25 SPR 155TH AVE 3066

#1618858

BD	BW	WW	Cat.	%	Tattoos	Dam's Age	Dam's MPPA							
4/3/13	107	715	1A	100%	3066 DM	5	105.1							
CED	BW	WW	YW	Milk	TM	ME	HPG	CEM	Stay	Marb	YG	CW	REA	Fat
-4	4.3	72	123	14	50	4	12	5	11	0.48	0.11	50	0.18	0.00
99%	99%	4%	2%	84%	24%	76%	20%	42%	47%	36%	88%	1%	38%	43%

5L SIGNATURE 5615
5L BEN NORTH 1102-6627
 5L ROXIE X854-1102
 NEO-SHO MILLENIUM 065G
SPUR M MILLENIUM 8030
 MCGEE MS BULLS-EYE 228

5L NORSEMAN KING 2291
 5L RUBY 199-01
 5L BLACK BEN 15-898
 XXX ROXIE 854 MR
 LCHMN HIGH YIELD 1802C
 MS NEO-SHO 2131 C302
 MCGEE BULLS-EYE 806
 MER VANNA 301

2013 BEST OF THE WEST SALE



MCGEE RED ANGUS

Welcome to our Fifth Annual Production Sale! 2013 has been an interesting year for the cattlemen. In the spring we were faced with a drought that had ranchers wondering about the future of their herd. Thankfully, prayers were heard, by the end of May the rain started and continued throughout the summer and fall. Feed was restocked, calves weighed up, cattle prices were high and the cattlemen were thankful.

McGee Red Angus strives to produce balanced Red Angus genetics that will benefit both the commercial and seedstock breeders. Being a commercial cattleman, we understand the needs and genetic traits required to put more dollars in the cattleman's pocket. Our program concentrates on profitable seed stock, emphasizing calving ease, growth potential, structural soundness, high fertility and strong maternal qualities. The same genetics we are offering for sale are used in our commercial herd. Artificial insemination is used in our synchronized breeding program to produce high-performing calves with predictable performance.

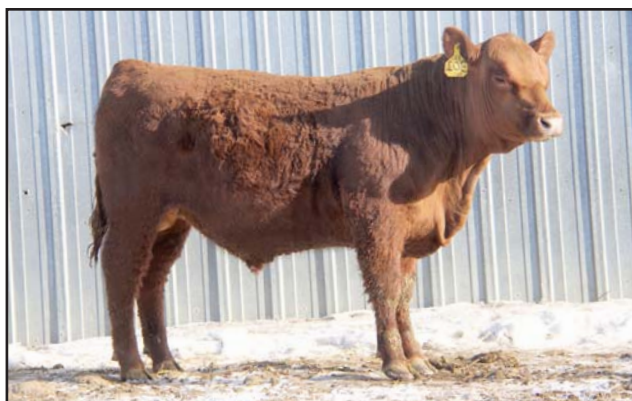
Our calves are range calved and raised on dryland native pasture. Our bull calves are fed a moderate ration with the goal being natural muscle expression and prime condition. Our bulls are not overfed or overweight so they will be ready to go to work at turnout time. With our feeding program your bulls will maintain better quality feet, longevity and body condition that can be easily maintained.

McGee Red Angus raises the kind of cattle that will complement your herd, make you a profit and satisfied customer. We want to thank our past customers for your returning support and we look forward to making connections with new customers. See you February 26th!

McGee Red Angus, Meryl, Stacy and Cashae McGee
701-279-5539 (home), 701-523-6995 (cell)



Cashae and her 4-H steer



Lot 27

26 MCGEE KEOSTER YIELD 300

#1644588

BD	BW	WW	Cat.	%	Tattoos	Dam's Age	Dam's MPPA							
2/14/13	70	615	1A	100%	300 MER	2	100.4							
CED	BW	WW	YW	Milk	TM	ME	HPG	CEM	Stay	Marb	YG	CW	REA	Fat
3	-2.9	54	84	19	46	6	10	7	10	0.45	-0.04	16	0.10	-0.03
57%	21%	53%	54%	43%	47%	87%	54%	17%	58%	42%	29%	61%	54%	7%

LSF HIGH YIELD 8088U
KOESTER YIELD 023
JACOBSON RITA 8031

HRR JULIAN 961
MCGEE CASH 128
MCGEE CASH 506

MESSMER PACKER S008
LSF COVER GIRL K1426 R5057
LJC JAVELIN M08
BT TOP RITA O 07
TR JULIAN LT142
HRR LAKOTA 757
HOLDEN HIGHLIGHT 807
MCGEE BARBRA 123

This will be a good heifer bull.

27 MCGEE KEOSTER YIELD 301

#1644590

BD	BW	WW	Cat.	%	Tattoos	Dam's Age	Dam's MPPA							
2/14/13	70	603	1A	100%	301 MER	2	99.6							
CED	BW	WW	YW	Milk	TM	ME	HPG	CEM	Stay	Marb	YG	CW	REA	Fat
5	-3.1	55	86	15	42	6	9	8	13	0.47	-0.05	17	0.17	-0.03
36%	19%	50%	50%	80%	73%	84%	61%	10%	21%	38%	25%	57%	40%	7%

LSF HIGH YIELD 8088U
KOESTER YIELD 023
JACOBSON RITA 8031

HRR JULIAN 961
MCGEE MS DATA 708-113
MCGEE MISS DATA 708

MESSMER PACKER S008
LSF COVER GIRL K1426 R5057
LJC JAVELIN M08
BT TOP RITA O 07
TR JULIAN LT142
HRR LAKOTA 757
SHOCO DATA
MCGEE VANNA 034

This is heifer bull deluxe!

YEARLING BULLS

McGee Red Angus



Lot 28

28 MCGEE KEOSTER 306

#1644589

BD	BW	WW	Cat.	%	Tattoos	Dam's Age	Dam's MPPA							
2/17/13	77	633	1A	100%	306 MER	2	101.6							
CED	BW	WW	YW	Milk	TM	ME	HPG	CEM	Stay	Marb	YG	CW	REA	Fat
6	-2.1	59	88	18	47	6	9	5	12	0.47	-0.06	19	0.23	-0.03
28%	33%	34%	44%	59%	42%	86%	66%	42%	31%	38%	22%	48%	30%	7%

LSF HIGH YIELD 8088U
KOESTER YIELD 023
 JACOBSON RITA 8031

HRR JULIAN 961
MCGEE MS BULLSEYE 505-123
 MCGEE MS BULLSEYE 505

MESSMER PACKER S008
 LSF COVER GIRL K1426 R5057
 LJC JAVELIN M08
 BT TOP RITA O 07
 TR JULIAN LT142
 HRR LAKOTA 757
 BFCK CHEROKEE CNYN 4912
 MCGEE MISS BULLSEYE 128

The perfect heifer bull.

29 MCGEE KEOSTER YIELD 307

#1644596

BD	BW	WW	Cat.	%	Tattoos	Dam's Age	Dam's MPPA							
2/17/13	75	601	1A	100%	307 MER	2	99.6							
CED	BW	WW	YW	Milk	TM	ME	HPG	CEM	Stay	Marb	YG	CW	REA	Fat
5	-2.4	53	83	20	46	7	10	8	13	0.45	-0.05	16	0.11	-0.03
36%	28%	56%	55%	42%	49%	90%	61%	10%	25%	42%	25%	59%	52%	7%

LSF HIGH YIELD 8088U
KOESTER YIELD 023
 JACOBSON RITA 8031

HRR JULIAN 961
MCGEE JULIE 112
 JACOBSON RE MON 8148

MESSMER PACKER S008
 LSF COVER GIRL K1426 R5057
 LJC JAVELIN M08
 BT TOP RITA O 07

TR JULIAN LT142
 HRR LAKOTA 757
 JACOBSON VACATION 6078
 JACOBSON RE MON 6129

He will make a good heifer bull and add some growth.

30 MCGEE KEOSTER YIELD 312

#1644587

BD	BW	WW	Cat.	%	Tattoos	Dam's Age	Dam's MPPA							
2/23/13	80	586	1A	100%	312 MER	2	98.4							
CED	BW	WW	YW	Milk	TM	ME	HPG	CEM	Stay	Marb	YG	CW	REA	Fat
3	-0.6	54	87	18	45	6	10	7	11	0.46	-0.03	22	0.12	-0.03
57%	62%	53%	46%	53%	54%	86%	48%	17%	51%	40%	33%	41%	50%	7%

LSF HIGH YIELD 8088U
KOESTER YIELD 023
 JACOBSON RITA 8031

HRR JULIAN 961
MCGEE MS PACKER 513-125
 MCGEE MS PACKER 513

MESSMER PACKER S008
 LSF COVER GIRL K1426 R5057
 LJC JAVELIN M08
 BT TOP RITA O 07

TR JULIAN LT142
 HRR LAKOTA 757
 HOLDEN HIGHLIGHT 807
 MC GEE HANNA 004

Another outstanding heifer bull to get the job done.

31 MCGEE SAKIC 314

#1644575

BD	BW	WW	Cat.	%	Tattoos	Dam's Age	Dam's MPPA							
2/28/13	85	564	1A	100%	314 MER	8	94.8							
CED	BW	WW	YW	Milk	TM	ME	HPG	CEM	Stay	Marb	YG	CW	REA	Fat
-1	0.7	58	85	17	46	1	12	11	8	0.15	0.11	21	-0.19	-0.02
90%	84%	39%	52%	62%	49%	46%	19%	2%	85%	94%	88%	41%	97%	12%

RED SIX MILE AVIATOR 217P
RED SIX MILE SAKIC 832S
 RED SIX MILE SIERA 257P

HOLDEN HIGHLIGHT 807
MCGEE MS PACKER 513
 MC GEE HANNA 004

RED WILDMAN DENALI 19L
 RED RSL SUE 400F
 RED SIX MILE CUJO 800M
 RED BOUNTY B MISS SIERA BAR

LARSON RED LIGHTNING
 HOLDEN FIRESTORM 591
 MCGEE BULLS-EYE 806
 MS HAMMEL PACKER H201

32 MCGEE MISSION STATEMENT 315

#1644581

BD	BW	WW	Cat.	%	Tattoos	Dam's Age	Dam's MPPA							
3/3/13	90	642	1A	100%	315 MER	5	100.5							
CED	BW	WW	YW	Milk	TM	ME	HPG	CEM	Stay	Marb	YG	CW	REA	Fat
2	0.6	66	113	16	49	6	11	4	10	0.35	-0.10	38	0.58	-0.03
67%	83%	13%	6%	71%	29%	89%	21%	58%	58%	66%	13%	5%	2%	7%

LJC LANCER 806
LJC MISSION STATEMENT P27
 LJC HANNAH 106

COLEY'S MOJITO 503R
JACOBSON REBALS 8019
 JACOBSON REBALS P31

BECKTON LANCER T A664
 LJC HB LIZZIE 606
 HOLDEN HI HO 753
 LJC KJ JAMIE 516

PERKS ADVANCE 121R
 NER COPPER QUEEN 2657
 JACOBSON MY DAY L09
 JACOBSON BANDO M21

33 MCGEE BOLD EDITION 316

#1644595

BD	BW	WW	Cat.	%	Tattoos	Dam's Age	Dam's MPPA							
3/4/13	85	601	1A	100%	316 MER	9	100.6							
CED	BW	WW	YW	Milk	TM	ME	HPG	CEM	Stay	Marb	YG	CW	REA	Fat
-2	0.3	52	81	19	45	-2	10	8	5	0.22	0.11	19	-0.19	-0.01
95%	78%	61%	60%	45%	56%	28%	41%	10%	98%	88%	88%	49%	97%	22%

RED FINE LINE MULBERRY 26P
RED HOWE BOLD EDITION 80T
 RED HOWE MS DUCHESS 144L

HOLDEN HIGHLIGHT 807
MCGEE TAMEY 416
 MER MISS BULLSEYE 905

RED COMPASS MULBERRY 449M
 RED DUS FAYETTE 8G
 RED CUMNOCK SARIO 252H
 RED WBR DUCHESS 43'96

LARSON RED LIGHTNING
 HOLDEN FIRESTORM 591
 LCHMN ON TARGET 1016E
 LMG TAMEY 728



Lot 33

McGee Red Angus

YEARLING BULLS



Cashae pole bending



Lot 35



Cashae goat tying



Lot 37

34 MCGEE CODE RED 317

#1644579

BD	BW	WW	Cat.	%	Tattoos	Dam's Age	Dam's MPPA							
3/5/13	89	595	1A	100%	317 MER	6	102.3							
CED	BW	WW	YW	Milk	TM	ME	HPG	CEM	Stay	Marb	YG	CW	REA	Fat
0	1.0	63	94	18	50	5	13	5	14	0.47	0.08	27	0.09	0.00
85%	88%	21%	32%	52%	25%	78%	5%	42%	13%	38%	80%	24%	56%	43%

PIE CODE RED 9058
BHR CODE RED 190
 MISS BHR CHAPTER ONE 681
 SHOCO DATA
MCGEE MISS DATA 712
 MS HAMMEL PACKER H201

VGW GAME PLAN 508
 PIE STORMY 541
 LCC NEW CHAPTER A705L
 MISS BHR STRETCH 205
 SHOCO SIR ROBIN
 VДАР BLACKANA 303
 MESSMER PACKER 9505
 MS HAMMEL CRICKET 501

35 MCGEE CODE RED 320

#1644591

BD	BW	WW	Cat.	%	Tattoos	Dam's Age	Dam's MPPA							
3/7/13	85	603	1A	100%	320 MER	11	102.2							
CED	BW	WW	YW	Milk	TM	ME	HPG	CEM	Stay	Marb	YG	CW	REA	Fat
2	-1.2	52	76	24	50	5	11	5	12	0.28	-0.03	14	0.22	-0.01
67%	49%	60%	69%	10%	24%	83%	26%	42%	32%	80%	33%	67%	31%	22%

PIE CODE RED 9058
BHR CODE RED 190
 MISS BHR CHAPTER ONE 681
 GLACIER CHATEAU 744
MER MCGEE MS JOSIE 220
 MER 315

VGW GAME PLAN 508
 PIE STORMY 541
 LCC NEW CHAPTER A705L
 MISS BHR STRETCH 205
 LMAN KING ROB 8621
 GLACIER REBALA
 LELAND JOSIE 642A
 LMG TAMEY 728

This could be your next herd sire! This bull will cover all your needs.

36 MCGEE MISSION STATEMENT 321

#1644577

BD	BW	WW	Cat.	%	Tattoos	Dam's Age	Dam's MPPA							
3/13/13	85	622	1A	100%	321 MER	7	99.3							
CED	BW	WW	YW	Milk	TM	ME	HPG	CEM	Stay	Marb	YG	CW	REA	Fat
-1	0.0	65	111	17	49	9	10	3	10	0.41	-0.09	37	0.58	-0.02
90%	73%	17%	6%	67%	30%	97%	42%	71%	66%	51%	14%	6%	2%	12%

LJC LANCER 806
LJC MISSION STATEMENT P27
 LJC HANNAH 106
 GLACIER CHATEAU 744
MISS MCGEE GLACIER 613
 MCGEE JORKA 231

BECKTON LANCER T A664
 LJC HB LIZZIE 606
 HOLDEN HI HO 753
 LJC KJ JAMIE 516
 LMAN KING ROB 8621
 GLACIER REBALA
 MCGEE BULLS-EYE 806
 EZB JORKA 629

37 MCGEE CODE RED 329

#1644592

BD	BW	WW	Cat.	%	Tattoos	Dam's Age	Dam's MPPA							
3/29/13	96	617	1A	100%	329 MER	11	102.2							
CED	BW	WW	YW	Milk	TM	ME	HPG	CEM	Stay	Marb	YG	CW	REA	Fat
-2	2.6	62	94	19	50	3	10	3	12	0.27	0.06	30	0.13	-0.01
95%	98%	24%	31%	44%	23%	68%	47%	71%	39%	82%	73%	17%	48%	22%

PIE CODE RED 9058
BHR CODE RED 190
 MISS BHR CHAPTER ONE 681
 MCGEE BULLS-EYE 806
MCGEE JORKA 231
 EZB JORKA 629

VGW GAME PLAN 508
 PIE STORMY 541
 LCC NEW CHAPTER A705L
 MISS BHR STRETCH 205
 LCHMN ON TARGET 1016E
 MER 315
 STRAKAS DILLON 5039
 EZB JORKA 259

YEARLING BULLS

McGee Red Angus

38 MCGEE CODE RED 330

#1644594

BD	BW	WW	Cat.	%	Tattoos	Dam's Age	Dam's MPPA							
3/29/13	85	631	1A	100%	330 MER	9	101.2							
CED	BW	WW	YW	Milk	TM	ME	HPG	CEM	Stay	Marb	YG	CW	REA	Fat
1	-1.0	57	87	25	53	4	12	3	12	0.30	0.07	21	-0.03	-0.01
77%	53%	41%	46%	9%	11%	75%	18%	71%	32%	77%	76%	44%	80%	22%

PIE CODE RED 9058
BHR CODE RED 190
 MISS BHR CHAPTER ONE 681
 HOLDEN HIGHLIGHT 807
MCGEE VANNA 408
 MCGEE VANNA 021

VGW GAME PLAN 508
 PIE STORMY 541
 LCC NEW CHAPTER A705L
 MISS BHR STRETCH 205
 LARSON RED LIGHTNING
 HOLDEN FIRESTORM 591
 MCGEE BULLS-EYE 806
 MER MISS HUSKER 600

39 MCGEE CODE RED 332

#1644578

BD	BW	WW	Cat.	%	Tattoos	Dam's Age	Dam's MPPA							
4/1/13	83	638	1A	100%	332 MER	7	108.5							
CED	BW	WW	YW	Milk	TM	ME	HPG	CEM	Stay	Marb	YG	CW	REA	Fat

PIE CODE RED 9058
BHR CODE RED 190
 MISS BHR CHAPTER ONE 681
 SHOCO DATA
MISS MCGEE DATA 609
 MCGEE VANNA 021

VGW GAME PLAN 508
 PIE STORMY 541
 LCC NEW CHAPTER A705L
 MISS BHR STRETCH 205
 SHOCO SIR ROBIN
 VDAR BLACKANA 303
 MCGEE BULLS-EYE 806
 MER MISS HUSKER 600

EPDs available sale day.



Feddes Big Sky R9, grandsire

40 MCGEE HRR BIG SKY 338

#1644584

BD	BW	WW	Cat.	%	Tattoos	Dam's Age	Dam's MPPA							
4/7/13	82	616	1A	100%	338 MER	4	101.7							
CED	BW	WW	YW	Milk	TM	ME	HPG	CEM	Stay	Marb	YG	CW	REA	Fat
1	-1.1	57	89	20	49	5	9	4	10	0.42	-0.07	21	0.33	-0.02
77%	51%	41%	43%	36%	32%	82%	63%	58%	56%	49%	19%	41%	17%	12%

FEDDES BIG SKY R9
HRR BIG SKY 837
 HRR BLOCKANA 654
 HRR TRIDENT 775
MISS MCGEE GLACIER 916
 MISS MCGEE GLACIER 613

BIEBER MAKE MIMI 7249
 FEDDES LAKINA 310
 HRR RAMBO 432ET
 HRR BLOCKANA 302
 VDAR RAMBO 323
 HOLDEN MISSY 622
 GLACIER CHATEAU 744
 MCGEE JORKA 231

Feeder Calf Certification Program

1. Make the call.
2. Provide special documentation.
3. Purchase tags.
4. Tag calves.
5. Fill out Enrollment Agreement.
6. Receive Certificate of Compliance (COC).



Red Angus Marketing Programs | redangus.org | (940) 387-3502

SCHRIEFER RED ANGUS

Excitement, enthusiasm and optimism describe how we feel about our bulls and heifers that we are offering in this year's sale! These words can also accurately describe the current conditions in the beef cattle industry. With that said, all of us at Schriefer Red Angus want to extend a warm and hearty welcome to our Fifth Annual "Best of the West" Red Angus Sale.

Here at Schriefer Red Angus, we continue to follow our management strategy of offering a balanced set of rugged 2-year-old bulls and fancy, functional yearling heifers. Using the parameters of Power, Performance and Predictability, we make our genetic choices to provide your ranch with the quality breeding stock that today's industry requires. We realize everyone has different needs in their bull/heifer choices but structural correctness, fertility, and performance are things that everyone is demanding. We hope you can easily find those traits in our offering.

We have kept the bulls on harvested cropland this winter to provide more exercise and our feeding regimen is still based on corn silage, free-choice mixed hay and Flaxlic. With the excellent grain content of our silage, we currently are not adding any additional grain in their ration and are satisfied with the performance and condition of the bulls. We do not creep feed and the registered cattle are treated the same as our commercial herd. We use the same genetics in our commercial herd as what we offer for sale, so we know what works and what

doesn't, and we feel the performance of our commercial cattle is the best testimony of how our purebred operation can complement your herds!

We would like to take this opportunity to thank all our past customers! Without your support, it would be a lot harder to be in the breeding stock business. A lot of you have become good friends and we take your input and comments seriously in our decisions. We are excited to offer extra heifers from some of our bull customers, as they also reflect on the direction of our own genetic program.

Thanks again for your interest – our goal is your satisfaction! May God bless you with a safe and prosperous 2014!



Marc, Jodi, Cassi, Bill, Cheyenne and Riley Schriefer

Schriefer Red Angus, Marc & Jodi Schriefer

701-983-4292 (home) • 701-870-4292 (cell) • 701-870-2790 (cell)

Riley & Cheyenne Schriefer

701-983-4289 (h) • 701-870-2609 (c)



Lot 41



Lot 42

41 SMJ CBB JOSHUA Z314

#1522213

BD	BW	WW	Cat.	%	Tattoos	Dam's Age	Dam's MPPA							
3/26/12	81	612	1A	100%	Z314 SMJ	4	98.2							
CED	BW	WW	YW	Milk	TM	ME	HPG	CEM	Stay	Marb	YG	CW	REA	Fat
6	-1.1	58	89	12	41	0	11	7	13	0.26	-0.01	21	0.18	0.00
28%	51%	39%	41%	91%	78%	43%	36%	17%	23%	83%	41%	42%	38%	43%

K BAR C BARN ONE 404
CBR BARN BOY 4340-7330
 CBR MISS KITTY 2346-4340

MESSMER JOSHUA 019P
SMJ JOSHUA DAY U290
 SMJ DAY RED LEE N294

BUF CRK BARNEY 3474
 LEACHMAN DINA 5919
 CBR SHOTGUN
 CBR CHEIFTESS 2346-846

BECKTON JULIAN GG B571
 MESSMER PANDORA M186
 SCHR MAKE MY DAY 40L
 BELMORAL MISS LEE 40'00

We start our offering with a mild-mannered, well-balanced and easy-going bull that should definitely inject pounds into your next calf crop. He is a naturally thick, strong-boned bull who has the volume, capacity and correctness that we like to produce. This Barn Boy/Joshua combination has a great set of balanced numbers to boot!

42 SMJ CBB RAMBO Z310

#1522205

BD	BW	WW	Cat.	%	Tattoos	Dam's Age	Dam's MPPA							
3/26/12	75	676	1A	100%	Z310 SMJ	5	99.1							
CED	BW	WW	YW	Milk	TM	ME	HPG	CEM	Stay	Marb	YG	CW	REA	Fat
9	-3.4	57	84	16	45	6	10	9	11	0.31	-0.03	14	0.10	-0.01
11%	16%	41%	55%	70%	57%	85%	52%	5%	50%	75%	33%	65%	54%	22%

K BAR C BARN ONE 404
CBR BARN BOY 4340-7330
 CBR MISS KITTY 2346-4340

MLK CRK RAMBO 4145
SMJ RAMBO RR T289
 SMJ RR CARLY 0217

BUF CRK BARNEY 3474
 LEACHMAN DINA 5919
 CBR SHOTGUN
 CBR CHEIFTESS 2346-846

VDAR RAMBO 323
 MLK CRK LAKOTA 850
 CFLD REBELLAS ROBINHOOD
 SMJ CARLY 9722

Lot 42 is a dark cherry red bull that can work for anyone with numbers like 75# BW (ratio 88) spread to 676 WW (ratio 103). This masculine, moderate-framed bull is strong topped, square rumped and carries a lot of muscle from front to rear. Look here for calving ease with performance on your cows!

2-YEAR-OLD BULLS

Schriefer Red Angus



Lot 43

43 SMJ CBB RAMBO Z804

#1522212

BD	BW	WW	Cat.	%	Tattoos	Dam's Age	Dam's MPPA							
5/5/12	91	694	1B	99.9%	Z804 SMJ	5	103.3							
CED	BW	WW	YW	Milk	TM	ME	HPG	CEM	Stay	Marb	YG	CW	REA	Fat
5	-0.5	64	94	17	49	6	9	8	12	0.16	0.00	25	0.11	-0.01
36%	64%	19%	30%	62%	29%	85%	71%	10%	30%	93%	46%	31%	52%	22%

K BAR C BARN ONE 404
CBR BARN BOY 4340-7330
 CBR MISS KITTY 2346-4340

MLK CRK RAMBO 4145
CSMJ RAMBO DAY T604
 CSMJ DAY ERNA N601

BUF CRK BARNEY 3474
 LEACHMAN DINA 5919
 CBR SHOTGUN
 CBR CHEIFFESS 2346-846
 VDAR RAMBO 323
 MLK CRK LAKOTA 850
 SCHR MAKE MY DAY 40L
 SMJ ERNA 9931

Muscle, performance and great disposition all describe Lot 43. He will definitely catch your eye on sale day with his natural dimension from head to tail and with his overall correctness on his feet and legs. Lot 43 comes from a great Rambo lineage cow (MPPA 103.3) and his numbers indicate him to be a great female maker himself.



Lot 44

44 SMJ CBB HEAVENLY Z254

#1522231

BD	BW	WW	Cat.	%	Tattoos	Dam's Age	Dam's MPPA							
4/5/12	90	671	1B	99.9%	Z254 SMJ	9	104.7							
CED	BW	WW	YW	Milk	TM	ME	HPG	CEM	Stay	Marb	YG	CW	REA	Fat
4	-0.1	58	86	16	45	1	10	6	12	0.30	0.02	20	-0.04	-0.02
46%	71%	37%	50%	74%	57%	51%	58%	28%	32%	77%	55%	45%	81%	12%

K BAR C BARN ONE 404
CBR BARN BOY 4340-7330
 CBR MISS KITTY 2346-4340

LEACHMAN HEAVENLY 1517C
SMJ HEAVENLY CHAT N268
 SMJ MISS CHAT 26501

BUF CRK BARNEY 3474
 LEACHMAN DINA 5919
 CBR SHOTGUN
 CBR CHEIFFESS 2346-846
 LEACHMAN HEAVENLY 8141
 XXX ROXIE 1148 MR
 MCGEE CHATEAU 929
 SMJ ALICE 96231

If you need a shot of performance, Lot 44 has pounds written all over him! This guy is a thick, deep, high-volumed individual that comes out of one of our best cows (MPPA 104.7). In addition, he is heavy boned and was our heaviest bull coming off grass and when we clipped.



Lot 45

45 SMJ CBB AB Z292

#1522199

BD	BW	WW	Cat.	%	Tattoos	Dam's Age	Dam's MPPA							
5/11/12	94	663	1A	100%	Z292 SMJ	7	102							
CED	BW	WW	YW	Milk	TM	ME	HPG	CEM	Stay	Marb	YG	CW	REA	Fat
6	-0.6	65	99	15	47	2	10	9	12	0.34	0.10	27	0.00	0.01
28%	62%	17%	22%	78%	40%	54%	52%	5%	39%	68%	86%	24%	74%	61%

K BAR C BARN ONE 404
CBR BARN BOY 4340-7330
 CBR MISS KITTY 2346-4340

LCC ABOVE & BEYOND 1300J
SMJ A.B. DAY R290
 SMJ DAY RED LEE N294

BUF CRK BARNEY 3474
 LEACHMAN DINA 5919
 CBR SHOTGUN
 CBR CHEIFFESS 2346-846
 LCHMAN.ABOVEHEAVEN1018F
 HXC 701G
 SCHR MAKE MY DAY 40L
 BELMORAL MISS LEE 40'00

Lot 45 is a real performance-minded meat wagon! Check out his natural width of his top and rump and how wide he tracks out from the rear. He is another easy-mannered Barn Boy son that really puts a nice set of numbers on paper ... WW +65 (top 17%), YW +98 (top 22%).



Cheyenne and her bottle calf

46 SMJ CBB RAMBO Z250

#1522207

BD	BW	WW	Cat.	%	Tattoos	Dam's Age	Dam's MPPA							
4/8/12	88	741	1A	100%	Z250 SMJ	5	104.7							
CED	BW	WW	YW	Milk	TM	ME	HPG	CEM	Stay	Marb	YG	CW	REA	Fat
5	-1.2	66	97	15	48	6	9	7	13	0.05	0.08	26	-0.17	-0.02
36%	49%	14%	24%	79%	37%	88%	65%	17%	21%	97%	80%	28%	96%	12%

K BAR C BARN ONE 404
CBR BARN BOY 4340-7330
 CBR MISS KITTY 2346-4340

MLK CRK RAMBO 4145
SMJ RAMBO MONU 4X T250
 SMJMONU DENISE P226

BUF CRK BARNEY 3474
 LEACHMAN DINA 5919
 CBR SHOTGUN
 CBR CHEIFFESS 2346-846
 VDAR RAMBO 323
 MLK CRK LAKOTA 850
 BJR MONU 4X-303
 SMJ MISS VAQUERO 25901

This soggy yet stylish bull has to be a cattleman's choice. He ratioed 113 with a weaning weight of 741 lbs. - all while maintaining a moderate and structurally correct frame. Don't overlook this bull!

Schriefer Red Angus

2-YEAR-OLD BULLS



Lot 47

47 RSMJ CBB BV Z800

#152221

BD	BW	WW	Cat.	%	Tattoos	Dam's Age	Dam's MPPA							
4/10/12	90	675	1A	100%	Z800 SMJ	4	95.3							
CED	BW	WW	YW	Milk	TM	ME	HPG	CEM	Stay	Marb	YG	CW	REA	Fat
4	0.0	63	91	7	39	3	11	6	13	0.16	-0.01	24	0.12	-0.01
46%	73%	22%	37%	99%	88%	64%	33%	28%	21%	93%	41%	35%	50%	22%

K BAR C BARN ONE 404
CBR BARN BOY 4340-7330
 CBR MISS KITTY 2346-4340
 BROWN VACATION H7106
RSMJ VACATION REDMAN U800
 SMJ INA 9909

BUF CRK BARNEY 3474
 LEACHMAN DINA 5919
 CBR SHOTGUN
 CBR CHEIFTESS 2346-846
 BECKTON JULIAN GG B571
 LCHMN FLOWER C1161
 WBB RED BRANDY 9610
 SMJ CARLY 9722

It's hard to find any faults in this bull both visually and on paper! Check out his performance and carcass EPDs and factor those in with his heavy-muscled, easy-fleshing appearance. Add his great disposition, and you have a herd sire prospect!

48 SMJ CBB RAMBO Z294

#152221

BD	BW	WW	Cat.	%	Tattoos	Dam's Age	Dam's MPPA							
4/10/12	96	744	1A	100%	Z294 SMJ	5	106.5							
CED	BW	WW	YW	Milk	TM	ME	HPG	CEM	Stay	Marb	YG	CW	REA	Fat
6	-0.5	69	103	17	52	5	9	10	12	0.27	0.11	30	0.00	0.01
28%	64%	9%	15%	61%	16%	80%	65%	3%	35%	82%	88%	17%	74%	61%

K BAR C BARN ONE 404
CBR BARN BOY 4340-7330
 CBR MISS KITTY 2346-4340

BUF CRK BARNEY 3474
 LEACHMAN DINA 5919
 CBR SHOTGUN
 CBR CHEIFTESS 2346-846

MLK CRK RAMBO 4145
SMJ RAMBO AB T292
 SMJ A.B. DAY R290

VDAR RAMBO 323
 MLK CRK LAKOTA 850
 LCC ABOVE & BEYOND 1300J
 SMJ DAY RED LEE N294

Pounds pay and when you are looking for that added boost to your next calf crop. Be sure to consider Lot 48! This Barn Boy son's numbers are indicative of his type... WW +69 (top 9%) with a 205-day adjusted weight of 744 lbs. (ratio 114) and YW +103 (top 15%). The Rambo maternal lines shine through in his maternal numbers, correctness and manners.



Marc dragging one to the fire

49 SMJ BV289 MAKE DAY Z357

#152220

BD	BW	WW	Cat.	%	Tattoos	Dam's Age	Dam's MPPA							
3/21/12	88	592	1A	100%	Z357 SMJ	7	98.3							
CED	BW	WW	YW	Milk	TM	ME	HPG	CEM	Stay	Marb	YG	CW	REA	Fat
3	-1.4	44	65	18	40	4	10	4	11	0.40	-0.18	6	0.16	-0.04
57%	45%	85%	87%	54%	83%	72%	57%	58%	40%	54%	5%	84%	42%	4%

BROWN VACATION H7106
SMJ VACATION RR U289
 SMJ RR CARLY 0217

BECKTON JULIAN GG B571
 LCHMN FLOWER C1161
 CFLD REBELLAS ROBINHOOD
 SMJ CARLY 9722

SCHR MAKE MY DAY 40L
SMJ DAY DOLLY R267
 SMJ DOLLY 9725

BJR MAKE MY DAY 981
 MS FORSTER PATRIOT 8107
 WBB RED POWER
 SMJ CASSI 92

If you're looking for a larger outlined, easy-keeping bull to add to herd sire battery, check out this guy. A lot of our commercial heifers past and present have come from these same bloodlines which we have used on our cows with success. He's balanced on paper and easy on the eyes!

50 NON-REGISTERED

N/A

BD	BW	WW	Cat.	%	Tattoos	Dam's Age	Dam's MPPA
3/20/12	71						

MLK CRK CUB 722
RED CROWFOOT OLE'S OSCAR
 RED CROWFOOT OMEGA 9179J

GLACIER CUB 446
 MLK CRK LAKOTA 152-HOBO
 RED PRICE 631
 RED OMEGA 7456

HLH BUSTER 406 603
COMMERCIAL COW

LCC HEAVEN OR BUST1000B
 HLH MS ARROW 908 406

We don't make a habit of keeping non-registered bulls but we used Ole's Oscar in our AI program and were only able to get a couple of bull calves from commercial heifers. This bull impressed us as a calf, so we decided to keep him intact and we think you'll be glad we did! A tank in terms of muscle, but really clean fronted and correct in his type and kind. Actual data (no age adjustments) 10/04/12 weight: 594, 10/20/13 off-grass weight: 1285, 1/10/14 weight: 1475.

51 SMJ LANCER COMBINATION Z302

#1522206

BD	BW	WW	Cat.	%	Tattoos	Dam's Age	Dam's MPPA							
4/3/12	80	589	1A	100%	Z302 SMJ	5	92.9							
CED	BW	WW	YW	Milk	TM	ME	HPG	CEM	Stay	Marb	YG	CW	REA	Fat
7	-2.5	57	84	5	33	2	12	4	9	0.41	0.08	16	0.08	0.03
21%	27%	44%	54%	99%	97%	59%	15%	38%	69%	51%	80%	60%	58%	87%

BUF CRK LANCER-F L297
HRR LANCER 024
 HRR FREYJA 8101

BECKTON LANCER F442 T
 BUF CRK LASS 4158
 SHOCO DATA
 BJR MATTIE 074-361

LSF COMBINATION A301M
SMJ COMBINATION CC T298
 SMJ C.C. KERRY P298

LCHMN TOP BRASS 1049H
 WHF LASS 27G-29J
 BFCK CHEROKEE CNYN 4912
 BELMORAL KERRY 71'00

Lot 51 is an efficient, calving-ease bull that has gained quite well this winter. He is typical of the Lancer bulls with calving ease numbers like 80# BW, -2.5BW EPD and a CED of 7. When viewed from the rear, Lot 51 has a wide stance, and has nice dimension over his hooks and pins.



Lot 51

2-YEAR-OLD BULLS

Schriefer Red Angus

52 SMJ LANCER MAKE DAY Z803 #1522198

BD	BW	WW	Cat.	%	Tattoos	Dam's Age	Dam's MPPA							
3/24/12	80	627	1A	100%	Z803 SMJ	7	98.8							
CED	BW	WW	YW	Milk	TM	ME	HPG	CEM	Stay	Marb	YG	CW	REA	Fat
10	-3.0	53	74	15	42	1	8	6	10	0.34	-0.10	9	0.13	-0.02
8%	20%	58%	74%	77%	76%	44%	87%	28%	56%	68%	13%	79%	48%	12%

BUF CRK LANCER-F L297
HRR LANCER 024
 HRR FREYJA 8101
 SCHR MAKE MY DAY 40L
RSMJ DAY BRANDY R800
 SMJ INA 9909

BECKTON LANCER F442 T
 BUF CRK LASS 4158
 SHOCO DATA
 BJR MATTIE 074-361
 BJR MAKE MY DAY 981
 MS FORSTER PATRIOT 8107
 WBB RED BRANDY 9610
 SMJ CARLY 9722

Here is a very stylish, long-necked, clean-fronted bull that is strong across his top and square into his hind quarter. He ranks in the breed's top 8% with a CED of 10 and in the top 20% with a BW EPD of -3.0. He combines a lot of eye appeal, potential calving ease and a pretty nice set of carcass EPDs (MARB +.34, REA +.13, FAT -0.02)



Riley's Ranch Rodeo Team

53 SMJ CBB CBB Z253 #1522222

BD	BW	WW	Cat.	%	Tattoos	Dam's Age	Dam's MPPA							
3/25/12	95	568	1B	99.9%	Z253 SMJ	3	99.8							
CED	BW	WW	YW	Milk	TM	ME	HPG	CEM	Stay	Marb	YG	CW	REA	Fat
2	1.3	62	92	11	42	3	10	6	12	0.23	0.06	26	-0.02	-0.01
67%	91%	24%	35%	96%	76%	61%	40%	28%	36%	87%	73%	26%	78%	22%

K BAR C BARN ONE 404
CBR BARN BOY 4340-7330
 CBR MISS KITTY 2346-4340
 CBR BARN BOY 4340-7330
SMJ ALICE HEAVEN BB W254
 SMJ HEAVENLY CHAT N268

BUF CRK BARNEY 3474
 LEACHMAN DINA 5919
 CBR SHOTGUN
 CBR CHEIFFESS 2346-846
 K BAR C BARN ONE 404
 CBR MISS KITTY 2346-4340
 LEACHMAN HEAVENLY 1517C
 SMJ MISS CHAT 26501

Lot 53 is a double-bred Barn Boy son that will display a lot of style and balance in the bull pens and on the data sheets. He has a picture-perfect head, is clean fronted and tight sheathed. A lot of value and productivity in a moderate-framed package.

54 SMJ CBB NEL Z602 #1522220

BD	BW	WW	Cat.	%	Tattoos	Dam's Age	Dam's MPPA							
4/8/12	85	589	1A	100%	Z602 SMJ	4	90.9							
CED	BW	WW	YW	Milk	TM	ME	HPG	CEM	Stay	Marb	YG	CW	REA	Fat
4	-0.3	51	81	9	34	1	11	6	12	0.31	0.03	18	-0.01	0.00
46%	68%	63%	61%	98%	96%	44%	32%	28%	38%	75%	60%	54%	76%	43%

K BAR C BARN ONE 404
CBR BARN BOY 4340-7330
 CBR MISS KITTY 2346-4340
 NO EQUAL IN THE LEAGUE 1000P
CSMJ NEL BEL U602
 BELMORAL REBECCA 45'00

BUF CRK BARNEY 3474
 LEACHMAN DINA 5919
 CBR SHOTGUN
 CBR CHEIFFESS 2346-846
 LCC MAJOR LEAGUE A502M
 PAR BLOCKANA 606
 RED BELMORAL MONARCHY 64'97
 RED BELMORAL REBECCA 4'98

You will notice this handsome bull on sale day. He is a larger outlined bull with a lot stretch from head to tail. We sure appreciate his length of side, depth of rib and overall balance.

55 SMJ CBB COMBINATION Z307 #1522204

BD	BW	WW	Cat.	%	Tattoos	Dam's Age	Dam's MPPA							
4/2/12	86	561	1B	99.9%	Z307 SMJ	5	89.5							
CED	BW	WW	YW	Milk	TM	ME	HPG	CEM	Stay	Marb	YG	CW	REA	Fat
2	-0.9	56	85	1	29	6	13	7	8	0.45	0.07	19	0.03	0.01
67%	55%	45%	52%	99%	99%	84%	7%	17%	83%	42%	76%	50%	68%	61%

K BAR C BARN ONE 404
CBR BARN BOY 4340-7330
 CBR MISS KITTY 2346-4340
 LSF COMBINATION A301M
SMJ COMB CHATEAU T268
 SMJ MISS CHAT 26501

BUF CRK BARNEY 3474
 LEACHMAN DINA 5919
 CBR SHOTGUN
 CBR CHEIFFESS 2346-846
 LCHMN TOP BRASS 1049H
 WHF LASS 27G-29J
 MCGEE CHATEAU 929
 SMJ ALICE 96231

Take note of this easy-going, easy-keeping Barn Boy son. He is stout and solid with a lot of depth into the chest and fore rib. Lot 55 is a long, deep-sided bull with width and natural thickness across his top and rump.

56 SMJ CBB RAMBO Z300 #1522215

BD	BW	WW	Cat.	%	Tattoos	Dam's Age	Dam's MPPA							
3/24/12	69	595	1A	100%	Z300 SMJ	4	102							
CED	BW	WW	YW	Milk	TM	ME	HPG	CEM	Stay	Marb	YG	CW	REA	Fat
5	-0.8	56	85	16	44	2	10	6	11	0.17	0.06	19	0.01	0.01
36%	58%	48%	50%	70%	63%	55%	55%	28%	50%	92%	73%	48%	72%	61%

K BAR C BARN ONE 404
CBR BARN BOY 4340-7330
 CBR MISS KITTY 2346-4340
 MLK CRK RAMBO 4145
SMJ RAMBO U233
 BELMORAL REBECCA 39'00

BUF CRK BARNEY 3474
 LEACHMAN DINA 5919
 CBR SHOTGUN
 CBR CHEIFFESS 2346-846
 V DAR RAMBO 323
 MLK CRK LAKOTA 850
 RED BELMORAL MONARCHY 64'97
 RED BELMORAL REBECCA 60'96

The Barn Boy sire is no longer with us, but this son carries his genotypic and phenotypic stamp. Chock full of muscle, good length and a great disposition combined with a balanced set of numbers, keep bulls like this very desirable and profitable to today's producers. He was born and raised as a twin to a heifer calf.



Lot 55



Lot 56

Schriefer Red Angus

2-YEAR-OLD BULLS



Cheyenne and Jodi gathering for branding



Lot 58

57 Z304 SMJ LANCER FL Z304

#1588729

BD	BW	WW	Cat.	%	Tattoos	Dam's Age	Dam's MPPA							
6/5/12	82	712	1A	100%	Z304 SMJ	3	98							
CED	BW	WW	YW	Milk	TM	ME	HPG	CEM	Stay	Marb	YG	CW	REA	Fat
5	-1.9	54	76	9	36	-3	6	4	11	0.36	-0.09	12	0.11	-0.03
36%	36%	55%	71%	97%	94%	21%	96%	58%	40%	64%	14%	73%	52%	7%

BUF CRK LANCER-F L297
HRR LANCER 024
 HRR FREYJA 8101
 RD TER-RON FULLY LOADED 540R
SMJ CARLY 4X FL W260
 SMJ MONU CARLY N217

BECKTON LANCER F442 T
 BUF CRK LASS 4158
 SHOCO DATA
 BJR MATTIE 074-361
 RED HEARTLAND KNIGHT CHARM 1
 RED TER-RON GOLDIE 240L
 BJR MONU 4X-303
 SMJ CARLY 9722

Calving ease, performance, and ME of -3 (top 21%) all give this Lancer son a leg up on the herd sire competition! Lot 57 is an easy, even-tempered bull who is smooth when viewed from the front and wide when viewed from the rear.

58 SMJ LANCER AB Z605

#1522196

BD	BW	WW	Cat.	%	Tattoos	Dam's Age	Dam's MPPA							
3/31/12	82	660	1A	100%	Z605 SMJ	7	97.1							
CED	BW	WW	YW	Milk	TM	ME	HPG	CEM	Stay	Marb	YG	CW	REA	Fat
12	-3.1	53	83	16	42	-2	9	9	13	0.47	0.02	15	0.05	0.01
3%	19%	59%	56%	74%	74%	28%	65%	5%	19%	38%	55%	63%	64%	61%

BUF CRK LANCER-F L297
HRR LANCER 024
 HRR FREYJA 8101
 LCC ABOVE & BEYOND 1300J
CSMJ AB BELL R602
 BELMORAL REBECCA 45'00

BECKTON LANCER F442 T
 BUF CRK LASS 4158
 SHOCO DATA
 BJR MATTIE 074-361
 LCHMAN.ABOVEHEAVEN1018F
 HXC 701G
 RED BELMORAL MONARCHY 64'97
 RED BELMORAL REBECCA 4'98

Lot 58 is a larger framed, long-striding Lancer son who should provide a shot of dimension and performance but maintain calving ease in your mature cows. Check out his extra stretch and depth through his chest and rib.

59 SMJ LANCER CBB Z303

#1522227

BD	BW	WW	Cat.	%	Tattoos	Dam's Age	Dam's MPPA							
4/7/12	64	600	1A	100%	Z303 SMJ	2	98							
CED	BW	WW	YW	Milk	TM	ME	HPG	CEM	Stay	Marb	YG	CW	REA	Fat
8	-1.9	57	82	15	43	-1	10	2	12	0.31	-0.06	16	0.24	0.00
15%	36%	42%	57%	80%	67%	34%	55%	82%	33%	75%	22%	61%	28%	43%

BUF CRK LANCER-F L297
HRR LANCER 024
 HRR FREYJA 8101
 CBR BARN BOY 4340-7330
SMJ BELL CC BB X301
 SMJC CANYON RED MISS N297

BECKTON LANCER F442 T
 BUF CRK LASS 4158
 SHOCO DATA
 BJR MATTIE 074-361
 K BAR C BARN ONE 404
 CBR MISS KITTY 2346-4340
 BFCK CHEROKEE CNYN 4912
 BELMORAL MISS 60'00

Calving-ease deluxe (BW: 64, CED: 8, BW EPD: -1.9) should be this Lancer's son most advantageous trait. Combine that with good maternal traits (Milk: +15), low maintenance numbers (ME: -1), and good carcass traits (MARB: .31, REA: .24, FAT: .00) make Lot 59 one to check out on sale date.

60 SMJ LANCER FULL LOAD Z291

#1522223

BD	BW	WW	Cat.	%	Tattoos	Dam's Age	Dam's MPPA							
4/1/12	68	644	1A	100%	Z291 SMJ	3	100							
CED	BW	WW	YW	Milk	TM	ME	HPG	CEM	Stay	Marb	YG	CW	REA	Fat
9	-3.7	51	72	14	39	-2	7	5	11	0.44	-0.12	7	0.16	-0.02
11%	13%	66%	78%	85%	86%	30%	94%	42%	51%	44%	10%	84%	42%	12%

BUF CRK LANCER-F L297
HRR LANCER 024
 HRR FREYJA 8101
 RD TER-RON FULLY LOADED 540R
SMJ CARLY RR FL W289
 SMJ RR CARLY 0217

BECKTON LANCER F442 T
 BUF CRK LASS 4158
 SHOCO DATA
 BJR MATTIE 074-361
 RED HEARTLAND KNIGHT CHARM 1
 RED TER-RON GOLDIE 240L
 CFLD REBELLAS ROBINHOOD
 SMJ CARLY 9722

When you need calving ease in a moderate package, don't overlook this Lancer son! All the data points to calving ease and his type and kind reinforces those numbers.



Marc and Riley moving heifers to spring pasture

REGISTERED OPEN HEIFERS

Spur M Red Angus

61 SPR MISS VIKING 3002 #1618878

BD	BW	WW	Cat.	%	Tattoos	Dam's Age	Dam's MPPA							
2/18/13	73	539	1A	100%	3002 DM	3	99.1							
CED	BW	WW	YW	Milk	TM	ME	HPG	CEM	Stay	Marb	YG	CW	REA	Fat
1	-1.7	56	91	11	39	-3	13	5	12	0.56	-0.08	22	0.43	0.00
77%	40%	47%	37%	95%	87%	24%	6%	41%	34%	21%	17%	40%	10%	44%

MESSMER JOSHUA 019P
MESSMER PACKER S008
 MESSMER MILLIE 124P
 5L BEN NORTH 1102-6627
SPR MISS BENJAMIN 0030
 MISS SPUR DIDLY 5032

BECKTON JULIAN GG B571
 MESSMER PANDORA M186
 VGW TOP PICK 130
 MESSMER MILLIE 9416
 5L SIGNATURE 5615
 5L ROXIE X854-1102
 PIE BODIDLY II 902
 MCGEE MS 4 TIMES 307

62 SPR MISS PACKER 3021 #1618869

BD	BW	WW	Cat.	%	Tattoos	Dam's Age	Dam's MPPA							
3/8/13	59	502	1A	100%	3021 DM	4	95.3							
CED	BW	WW	YW	Milk	TM	ME	HPG	CEM	Stay	Marb	YG	CW	REA	Fat
5	-3.9	49	82	13	37	-2	12	6	13	0.55	-0.12	13	0.48	0.01
36%	12%	70%	57%	91%	92%	29%	9%	27%	21%	22%	10%	67%	8%	62%

MESSMER JOSHUA 019P
MESSMER PACKER S008
 MESSMER MILLIE 124P
 5L BEN NORTH 1102-6627
SPR MISS NORTHLANDER 9033
 MCGEE TAMI 120

BECKTON JULIAN GG B571
 MESSMER PANDORA M186
 VGW TOP PICK 130
 MESSMER MILLIE 9416
 5L SIGNATURE 5615
 5L ROXIE X854-1102
 GLACIER CHATEAU 744
 LMG TAMEY 728

63 SPR MISS BIG TIME 3035 #1618871

BD	BW	WW	Cat.	%	Tattoos	Dam's Age	Dam's MPPA							
3/14/13	68	607	1A	100%	3035 DM	4	100.2							
CED	BW	WW	YW	Milk	TM	ME	HPG	CEM	Stay	Marb	YG	CW	REA	Fat
2	-2.9	60	93	12	42	7	13	1	10	0.09	-0.06	21	0.27	-0.01
67%	22%	32%	33%	92%	74%	92%	7%	90%	57%	95%	22%	44%	24%	22%

LSF MEW TRES TIEMPO 511S
LSF NSF BIG TIME U203
 MS NEO-SHO CATALYST M177
 SPUR COMBO PACK 5006
SPR MISS COMBOPACK 9045
 MCGEE JORICA 401

LSF CANYON CLASSIC 3037N
 LSF RACHEL LA409
 NEO-SHO CATALYST K593
 MS NSF PLAYBOY'S GOLD F620
 LSF COMBINATION A301M
 MCGEE MS CHATEAU 025
 BFCK CHEROKEE CNYN 4912
 MCGEE JORKA 231

64 SPR MISS HOLLYWOOD 3038 #1618903

BD	BW	WW	Cat.	%	Tattoos	Dam's Age	Dam's MPPA							
3/15/13	77	570	1A	100%	3038 DM	2	98.4							
CED	BW	WW	YW	Milk	TM	ME	HPG	CEM	Stay	Marb	YG	CW	REA	Fat
1	-0.8	47	76	18	42	0	9	4	12	0.37	-0.05	14	0.23	0.00
77%	57%	75%	69%	54%	74%	41%	77%	57%	34%	61%	26%	64%	30%	44%

WEBR DOC HOLLIDAY 2N
SPR MR. HOLIDAYS 9020
 MISS SPR FLAME 6032
 5L NORSEMAN KING 2291
SPR MISS MONARCHY 1022
 MCGEE VANNA 002

MLK CRK CUB 722
 WEBR MS DOLLY 1L
 CBR FLAME 924-47
 MCGEE MS JOSIE 328
 VGW KING OF THE WEST
 NORSEMAN 1312 PJM
 MCGEE BULLS-EYE 806
 MER MS LOGAN 800

65 SPR MISS BEN 3039 #1618910

BD	BW	WW	Cat.	%	Tattoos	Dam's Age	Dam's MPPA							
3/16/13	93	451	1A	100%	3039 DM	11	99.5							
CED	BW	WW	YW	Milk	TM	ME	HPG	CEM	Stay	Marb	YG	CW	REA	Fat
-2	2.8	46	79	14	37	-1	7	4	10	0.43	-0.05	22	0.27	-0.01
95%	98%	79%	64%	84%	91%	34%	93%	57%	55%	47%	26%	40%	24%	22%

5L SIGNATURE 5615
5L BEN NORTH 1102-6627
 5L ROXIE X854-1102
 MCGEE BULLS-EYE 806
MCGEE MS BULLS-EYE 228
 MER VANNA 301

5L NORSEMAN KING 2291
 5L RUBY 199-01
 5L BLACK BEN 15-898
 XXX ROXIE 854 MR
 LCHMN ON TARGET 1016E
 MER 315
 BHR VANGUARD 073
 MESSMER GABRIEL 9136

66 NON-REGISTERED

BD	BW	WW	Cat.	%	Tattoos	Dam's Age	Dam's MPPA							
CED	BW	WW	YW	Milk	TM	ME	HPG	CEM	Stay	Marb	YG	CW	REA	Fat

67 SPR MISS BEN 3055 #1618859

BD	BW	WW	Cat.	%	Tattoos	Dam's Age	Dam's MPPA							
3/27/13	81	534	1A	100%	3055 DM	5	96.2							
CED	BW	WW	YW	Milk	TM	ME	HPG	CEM	Stay	Marb	YG	CW	REA	Fat
0	0.5	54	96	18	45	4	13	5	11	0.48	0.05	28	0.08	0.00
85%	80%	53%	27%	54%	55%	77%	7%	41%	49%	35%	70%	21%	59%	44%

5L SIGNATURE 5615
5L BEN NORTH 1102-6627
 5L ROXIE X854-1102
 NEO-SHO MILLENIUM 065G
SPUR M MILLENIUM 8028
 MCGEE PET 437

5L NORSEMAN KING 2291
 5L RUBY 199-01
 5L BLACK BEN 15-898
 XXX ROXIE 854 MR
 LCHMN HIGH YIELD 1802C
 MS NEO-SHO 2131 C302
 PIE BODIDLY II 902
 SEEGER PET 163

68 SPR MISS BEN 3058 #1618839

BD	BW	WW	Cat.	%	Tattoos	Dam's Age	Dam's MPPA							
3/28/13	81	575	1A	100%	3058 DM	8	104.6							
CED	BW	WW	YW	Milk	TM	ME	HPG	CEM	Stay	Marb	YG	CW	REA	Fat
1	1.0	45	76	25	48	2	10	5	10	0.70	0.00	17	0.06	-0.01
77%	87%	80%	69%	6%	36%	52%	53%	41%	60%	8%	47%	55%	63%	22%

5L SIGNATURE 5615
5L BEN NORTH 1102-6627
 5L ROXIE X854-1102
 SIXL BANDO 120
MISS SISY SPUR 5002
 SIXE MS BOEING 335

5L NORSEMAN KING 2291
 5L RUBY 199-01
 5L BLACK BEN 15-898
 XXX ROXIE 854 MR
 BUF CRK BANDWAGON 3402
 SIXL MS MAKE MY DAY 925
 SIXL BOEING 747
 SIXL MS EMULOUS

69 SP MISS CONQUEST 3062

#1618883

BD	BW	WW	Cat.	%	Tattoos	Dam's Age	Dam's MPPA							
3/30/13	83	611	1A	100%	3062 DM	3	100							
CED	BW	WW	YW	Milk	TM	ME	HPG	CEM	Stay	Marb	YG	CW	REA	Fat
1	1.4	68	112	14	48	6	9	5	12	0.60	0.09	38	0.19	0.01
77%	91%	9%	6%	86%	36%	88%	70%	41%	33%	16%	84%	5%	37%	62%

HXC CONQUEST 4405P
SRR SUPER CONQUEST 03
 SRR DORY JIBA 815-5036

5L BEN NORTH 1102-6627
SPR MISS BENITA 0041
 SPR COMBINATION 6031

BECKTON JULIAN GG B571
 HXC ELLIE MAY MA638
 BASIN SALUTE 5359
 SRR DORY JIBA 5036-930
 5L SIGNATURE 5615
 5L ROXIE X854-1102
 LSF COMBINATION A301M
 MCGEE MISS CHATEAU 121

70 SP MISS HOLIDAY SPIRIT 3067

#1618876

BD	BW	WW	Cat.	%	Tattoos	Dam's Age	Dam's MPPA							
4/3/13	72	601	1A	100%	3067 DM	4	96.2							
CED	BW	WW	YW	Milk	TM	ME	HPG	CEM	Stay	Marb	YG	CW	REA	Fat
2	-3.1	46	69	14	37	4	11	6	8	0.39	0.01	6	-0.01	0.01
67%	19%	80%	81%	85%	93%	72%	29%	27%	80%	56%	51%	84%	77%	62%

WEBR DOC HOLLIDAY 2N
SPR MR. HOLIDAYS 9020
 MISS SPR FLAME 6032
 SPUR COMBO PACK 5006
SPR MISS SIXPAX 9040
 MISS SPUR FLAMINGO 7033

MLK CRK CUB 722
 WEBR MS DOLLY 1L
 CBR FLAME 924-47
 MCGEE MS JOSIE 328
 LSF COMBINATION A301M
 MCGEE MS CHATEAU 025
 CBR FLAME 924-47
 SIXE MS BOEING 335

71 SPR MISS HOLIDAY SPIRIT 3069

#1618895

BD	BW	WW	Cat.	%	Tattoos	Dam's Age	Dam's MPPA							
4/10/13	66	595	1A	100%	3069 DM	2	100							
CED	BW	WW	YW	Milk	TM	ME	HPG	CEM	Stay	Marb	YG	CW	REA	Fat
3	-2.1	50	80	19	44	2	10	5	9	0.47	0.02	15	0.06	0.01
56%	33%	66%	61%	47%	62%	57%	45%	41%	68%	37%	56%	63%	63%	62%

WEBR DOC HOLLIDAY 2N
SPR MR. HOLIDAYS 9020
 MISS SPR FLAME 6032

5L BEN NORTH 1102-6627
SPR MISS BENITA 1039
 MISS SPUR FLAME 7034

MLK CRK CUB 722
 WEBR MS DOLLY 1L
 CBR FLAME 924-47
 MCGEE MS JOSIE 328
 5L SIGNATURE 5615
 5L ROXIE X854-1102
 CBR FLAME 924-47
 MCGEE MISS KAY 410

72 SPR SPIRIT 3070

#1618863

BD	BW	WW	Cat.	%	Tattoos	Dam's Age	Dam's MPPA							
4/10/13	70	650	1A	100%	3070 DM	5	102.7							
CED	BW	WW	YW	Milk	TM	ME	HPG	CEM	Stay	Marb	YG	CW	REA	Fat
5	-3.0	56	89	18	46	5	11	7	7	0.35	0.10	18	-0.08	0.01
36%	20%	44%	41%	53%	46%	78%	31%	16%	87%	66%	87%	51%	89%	62%

WEBR DOC HOLLIDAY 2N
SPR MR. HOLIDAYS 9020
 MISS SPR FLAME 6032
 BUF CRK ROMEO L081
SPUR M JULIET 8006
 MISS SPR MILLIONS 6021

MLK CRK CUB 722
 WEBR MS DOLLY 1L
 CBR FLAME 924-47
 MCGEE MS JOSIE 328
 BECKTON JULIAN GG B571
 BUF CRK PRIMROSE 5679
 NEO-SHO MILLENIUM 065G
 EZB BIBBER EISA 635

73 SPR MISS CONQUEST 3073

#1618891

BD	BW	WW	Cat.	%	Tattoos	Dam's Age	Dam's MPPA							
4/17/13	65	612	1A	100%	3073 DM	3	101.7							
CED	BW	WW	YW	Milk	TM	ME	HPG	CEM	Stay	Marb	YG	CW	REA	Fat
6	-4.0	57	93	26	55	8	9	8	14	0.55	0.04	19	0.05	0.01
27%	11%	41%	33%	4%	7%	95%	74%	9%	13%	22%	65%	48%	65%	62%

HXC CONQUEST 4405P
SRR SUPER CONQUEST 03
 SRR DORY JIBA 815-5036

GMRA LARAMIE 5110
SPR MISS LARAMIE 0015
 MCGEE MS LOGAN 427

BECKTON JULIAN GG B571
 HXC ELLIE MAY MA638
 BASIN SALUTE 5359
 SRR DORY JIBA 5036-930
 LCC CHEYENNE B221L
 GMRA LAKOTA 341
 HOLDEN HIGHLIGHT 807
 MER MS LOGAN 800

74 SPR MISS CONQUEST 3078

#1618892

BD	BW	WW	Cat.	%	Tattoos	Dam's Age	Dam's MPPA							
4/29/13	78	579	1A	100%	3078 DM	3	96.6							
CED	BW	WW	YW	Milk	TM	ME	HPG	CEM	Stay	Marb	YG	CW	REA	Fat
4	-1.8	53	86	17	44	6	8	6	11	0.48	0.02	18	0.12	0.01
45%	38%	56%	49%	62%	63%	84%	87%	27%	42%	35%	56%	51%	50%	62%

HXC CONQUEST 4405P
SRR SUPER CONQUEST 03
 SRR DORY JIBA 815-5036
 SPUR COMBO PACK 5006
SPR MISS COMBINATION 0046
 MCGEE PET 437

BECKTON JULIAN GG B571
 HXC ELLIE MAY MA638
 BASIN SALUTE 5359
 SRR DORY JIBA 5036-930
 LSF COMBINATION A301M
 MCGEE MS CHATEAU 025
 PIE BODIDLY II 902
 SEEGER PET 163

75 SPR MISS HOLIDAY 3079

#1618851

BD	BW	WW	Cat.	%	Tattoos	Dam's Age	Dam's MPPA							
4/30/13	76	620	1A	100%	3079 DM	6	102.5							
CED	BW	WW	YW	Milk	TM	ME	HPG	CEM	Stay	Marb	YG	CW	REA	Fat
2	-1.1	56	88	16	44	3	8	7	9	0.31	0.07	20	0.01	0.01
67%	51%	43%	44%	71%	59%	61%	87%	16%	77%	74%	78%	45%	74%	62%

WEBR DOC HOLLIDAY 2N
SPR MR. HOLIDAYS 9020
 MISS SPR FLAME 6032
 BUF CRK ROMEO L081
MISS SPUR ROMEO 7024
 MCGEE MS BULLS-EYE 228

MLK CRK CUB 722
 WEBR MS DOLLY 1L
 CBR FLAME 924-47
 MCGEE MS JOSIE 328
 BECKTON JULIAN GG B571
 BUF CRK PRIMROSE 5679
 MCGEE BULLS-EYE 806
 MER VANNA 301



WEBR Doc Holliday 2N, grandssire

REGISTERED OPEN HEIFERS

Schriefer Red Angus

76 SMJ CARLY RAMBO FT A310 #1614753

BD	BW	WW	Cat.	%	Tattoos	Dam's Age	Dam's MPPA							
3/24/13	90	644	1A	100%	A310 SMJ	6	99.1							
CED	BW	WW	YW	Milk	TM	ME	HPG	CEM	Stay	Marb	YG	CW	REA	Fat
4	-0.9	58	91	18	47	2	5	7	11	0.45	0.04	22	0.05	0.00
45%	55%	38%	38%	57%	43%	57%	98%	16%	47%	42%	65%	38%	65%	44%

RED 6 MILE FULL THROTTLE171T
SMJ FULL THROTTLE AB X292
 SMJ A.B. DAY R290

MLK CRK RAMBO 4145
SMJ RAMBO RR T289
 SMJ RR CARLY 0217

RD TER-RON FULLY LOADED 540R
 RED SIX MILE WITZEL 360J
 LCC ABOVE & BEYOND 1300J
 SMJ DAY RED LEE N294
 VDAR RAMBO 323
 MLK CRK LAKOTA 850
 CFLD REBELLAS ROBINHOOD
 SMJ CARLY 9722

77 SMJ CARLY 4X FT A259 #1614750

BD	BW	WW	Cat.	%	Tattoos	Dam's Age	Dam's MPPA							
4/8/13	85	644	1A	100%	A259 SMJ	7	100.2							
CED	BW	WW	YW	Milk	TM	ME	HPG	CEM	Stay	Marb	YG	CW	REA	Fat
1	0.0	63	100	12	43	3	6	4	13	0.35	0.13	30	-0.06	0.01
77%	72%	22%	19%	93%	68%	67%	98%	57%	24%	66%	93%	18%	86%	62%

RED 6 MILE FULL THROTTLE171T
SMJ FULL THROTTLE AB X292
 SMJ A.B. DAY R290

BJR MONU 4X-303
SMJ MONU 4X R.ROBINHOODS289
 SMJ RR CARLY 0217

RD TER-RON FULLY LOADED 540R
 RED SIX MILE WITZEL 360J
 LCC ABOVE & BEYOND 1300J
 SMJ DAY RED LEE N294
 RED SSS MONU4X 237C
 RCRA SAMANTHA
 CFLD REBELLAS ROBINHOOD
 SMJ CARLY 9722

78 SMJ REBECCA AB FT A605 #1614743

BD	BW	WW	Cat.	%	Tattoos	Dam's Age	Dam's MPPA							
4/3/13	80	619	1A	100%	A605 SMJ	8	97.1							
CED	BW	WW	YW	Milk	TM	ME	HPG	CEM	Stay	Marb	YG	CW	REA	Fat
6	-0.5	54	94	13	40	-3	6	8	12	0.49	0.17	25	-0.09	0.03
27%	63%	53%	31%	87%	81%	21%	97%	9%	27%	33%	98%	29%	90%	89%

RED 6 MILE FULL THROTTLE171T
SMJ FULL THROTTLE AB X292
 SMJ A.B. DAY R290

LCC ABOVE & BEYOND 1300J
CSMJ AB BELL R602
 BELMORAL REBECCA 45'00

RD TER-RON FULLY LOADED 540R
 RED SIX MILE WITZEL 360J
 LCC ABOVE & BEYOND 1300J
 SMJ DAY RED LEE N294
 LCHMAN.ABOVEHEAVEN1018F
 HXC 701G
 RED BELMORAL MONARCHY 64'97
 RED BELMORAL REBECCA 4'98

79 SMJ INA BV FT A800 #1614769

BD	BW	WW	Cat.	%	Tattoos	Dam's Age	Dam's MPPA							
4/1/13	77	543	1A	100%	A800 SMJ	5	95.3							
CED	BW	WW	YW	Milk	TM	ME	HPG	CEM	Stay	Marb	YG	CW	REA	Fat
5	-1.2	48	76	12	36	-1	6	5	13	0.31	0.00	13	0.07	0.00
36%	49%	73%	70%	91%	93%	34%	96%	41%	18%	74%	47%	67%	61%	44%

RED 6 MILE FULL THROTTLE171T
SMJ FULL THROTTLE AB X292
 SMJ A.B. DAY R290

BROWN VACATION H7106
RSMJ VACATION REDMAN U800
 SMJ INA 9909

RD TER-RON FULLY LOADED 540R
 RED SIX MILE WITZEL 360J
 LCC ABOVE & BEYOND 1300J
 SMJ DAY RED LEE N294
 BECKTON JULIAN GG B571
 LCHMN FLOWER C1161
 WBB RED BRANDY 9610
 SMJ CARLY 9722

80 SMJ LEE AB CBB A292 #1614746

BD	BW	WW	Cat.	%	Tattoos	Dam's Age	Dam's MPPA							
3/22/13	72	613	1A	100%	A292 SMJ	8	102							
CED	BW	WW	YW	Milk	TM	ME	HPG	CEM	Stay	Marb	YG	CW	REA	Fat
8	-1.3	65	98	15	47	2	10	9	12	0.34	0.10	26	0.00	0.01
15%	47%	17%	22%	78%	39%	54%	52%	5%	37%	68%	87%	27%	75%	62%

K BAR C BARN ONE 404
CBR BARN BOY 4340-7330
 CBR MISS KITTY 2346-4340

LCC ABOVE & BEYOND 1300J
SMJ A.B. DAY R290
 SMJ DAY RED LEE N294

BUF CRK BARNEY 3474
 LEACHMAN DINA 5919
 CBR SHOTGUN
 CBR CHEIFTESS 2346-846
 LCHMAN.ABOVEHEAVEN1018F
 HXC 701G
 SCHR MAKE MY DAY 40L
 BELMORAL MISS LEE 40'00

81 SMJ BELLE NEL CBB A257 #1614759

BD	BW	WW	Cat.	%	Tattoos	Dam's Age	Dam's MPPA							
4/1/13	83	639	1A	100%	A257 SMJ	6	103.1							
CED	BW	WW	YW	Milk	TM	ME	HPG	CEM	Stay	Marb	YG	CW	REA	Fat
2	-0.3	58	88	17	46	3	11	3	10	0.37	0.04	22	-0.07	-0.01
67%	67%	38%	43%	61%	46%	68%	22%	72%	58%	61%	65%	39%	87%	22%

K BAR C BARN ONE 404
CBR BARN BOY 4340-7330
 CBR MISS KITTY 2346-4340

NO EQUAL IN THE LEAGUE 1000P
SMJ NO EQUAL LEAGUE HH T251
 SMJ H.H. RED BELL R291

BUF CRK BARNEY 3474
 LEACHMAN DINA 5919
 CBR SHOTGUN
 CBR CHEIFTESS 2346-846
 LCC MAJOR LEAGUE A502M
 PAR BLOCKANA 606
 HOLDEN HIGHLIGHT 807
 BELMORAL MISS 51'00

82 SMJ ABBEY RAMBO CBB A315 #1614767

BD	BW	WW	Cat.	%	Tattoos	Dam's Age	Dam's MPPA							
4/7/13	76	632	1A	100%	A315 SMJ	5	101.8							
CED	BW	WW	YW	Milk	TM	ME	HPG	CEM	Stay	Marb	YG	CW	REA	Fat
7	-2.0	57	84	18	47	6	9	10	12	0.19	0.03	17	0.02	0.00
20%	35%	41%	52%	54%	44%	84%	70%	3%	37%	90%	61%	57%	72%	44%

K BAR C BARN ONE 404
CBR BARN BOY 4340-7330
 CBR MISS KITTY 2346-4340

MLK CRK RAMBO 4145
SMJ RAMBO DAY U308
 SMJ DAY ABBEY P303

BUF CRK BARNEY 3474
 LEACHMAN DINA 5919
 CBR SHOTGUN
 CBR CHEIFTESS 2346-846
 VDAR RAMBO 323
 MLK CRK LAKOTA 850
 SCHR MAKE MY DAY 40L
 SCHR BONNEBELL 19L

83 SMJ ALICE COMB RUMBLER A307 #1614752

BD	BW	WW	Cat.	%	Tattoos	Dam's Age	Dam's MPPA							
3/31/13	75	500	1B	99.9%	A307 SMJ	6	89.5							
CED	BW	WW	YW	Milk	TM	ME	HPG	CEM	Stay	Marb	YG	CW	REA	Fat
4	-2.2	48	71	5	29	-1	12	5	9	0.38	0.02	9	0.06	0.02
45%	32%	75%	78%	99%	99%	34%	14%	41%	75%	59%	56%	79%	63%	80%

RED CROWFOOT RAMBLER 1024L
CBR RUMBLER 116-7140
 CBR DYNAMISS 116-721

LSF COMBINATION A301M
SMJ COMB CHATEAU T268
 SMJ MISS CHAT 26501

VGW RAMBLER 1000
 RED CROWFOOT SHAWNEE 9124J
 CBR MR DYNAMIC 316-04
 CBR HARRIET 3387-135
 LCHMN TOP BRASS 1049H
 WHF LASS 27G-29J
 MCGEE CHATEAU 929
 SMJ ALICE 96231

Schriefer Red Angus

REGISTERED OPEN HEIFERS

84 SMJ LEE RAMBO BUSTER A294 #1614760

BD	BW	WW	Cat.	%	Tattoos	Dam's Age	Dam's MPPA							
4/26/13	70	622	1A	100%	A294 SMJ	6	106.5							
CED	BW	WW	YW	Milk	TM	ME	HPG	CEM	Stay	Marb	YG	CW	REA	Fat
13	-6.5	52	79	23	49	7	10	10	12	0.30	0.01	7	-0.04	0.00
2%	2%	61%	64%	14%	30%	91%	52%	3%	33%	76%	51%	83%	83%	44%

HLH BUSTER 406 603
SMJ BUSTER RAMBO X256
 SMJ RAMBO CC U256

MLK CRK RAMBO 4145
SMJ RAMBO AB T292
 SMJ A.B. DAY R290

LCC HEAVEN OR BUST1000B
 HLH MS ARROW 908 406
 MLK CRK RAMBO 4145
 SMJ C CANYON RED LASS N295
 VDAR RAMBO 323
 MLK CRK LAKOTA 850
 LCC ABOVE & BEYOND 1300J
 SMJ DAY RED LEE N294

85 SMJ ALICE CBB BUSTER A 258 #1614780

BD	BW	WW	Cat.	%	Tattoos	Dam's Age	Dam's MPPA							
3/18/13	61	576	1B	99.9%	A258 SMJ	2	97.2							
CED	BW	WW	YW	Milk	TM	ME	HPG	CEM	Stay	Marb	YG	CW	REA	Fat
11	-5.3	53	79	15	41	4	11	7	12	0.25	-0.02	9	-0.05	-0.01
5%	4%	55%	63%	80%	76%	73%	27%	16%	38%	84%	38%	78%	84%	22%

HLH BUSTER 406 603
SMJ BUSTER RAMBO X256
 SMJ RAMBO CC U256

CBR BARN BOY 4340-7330
SMJ ALICE HEAVENLY BB Y254A
 SMJ HEAVENLY CHAT N268

LCC HEAVEN OR BUST1000B
 HLH MS ARROW 908 406
 MLK CRK RAMBO 4145
 SMJ C CANYON RED LASS N295
 K BAR C BARN ONE 404
 CBR MISS KITTY 2346-4340
 LEACHMAN HEAVENLY 1517C
 SMJ MISS CHAT 26501



Schriefer pair

86 SMJ ADDIE DOUBDUTY BUST A604 #1614789

BD	BW	WW	Cat.	%	Tattoos	Dam's Age	Dam's MPPA							
3/14/13	71	571	1A	100%	A604 SMJ	2	96.8							
CED	BW	WW	YW	Milk	TM	ME	HPG	CEM	Stay	Marb	YG	CW	REA	Fat
9	-3.5	53	81	13	40	2	11	6	8	0.23	0.00	13	0.02	-0.01
11%	15%	57%	59%	88%	84%	57%	29%	27%	79%	87%	47%	68%	72%	22%

HLH BUSTER 406 603
SMJ BUSTER RAMBO X256
 SMJ RAMBO CC U256

CBR DOUBLE DUTY 351-731
CBR MISS TRIFACTA 5323-1249
 CBR ADDIE 262-5323

LCC HEAVEN OR BUST1000B
 HLH MS ARROW 908 406
 MLK CRK RAMBO 4145
 SMJ C CANYON RED LASS N295
 RED CROWFOOT DOUBLE DUTY 212
 CBR MISS MESSY 165-351
 DKK ADDICTION N10
 CBR IGHNTNING 262-0137

COMMERCIAL OPEN HEIFERS

30 Select Red Angus-Sired Commercial Open Heifers

Consigned by Schriefer Red Angus

40 Select Red Angus-Sired Commercial Open Heifers

Consigned by McGee Red Angus

35 Select Red Angus-Sired Commercial Open Heifers

Consigned by Ferebee Ranch of Halliday, ND

These heifers are sired by Schriefer ad Spur M bulls. Contact Bob Ferebee at 701-938-4772 or 701-260-4772 for more information.

20 Select Red Angus-Sired Commercial Open Heifers

Consigned by Greg and Mary Steckler of Dunn Center, ND

These heifers are sired by a Schriefer Red Angus bull. Contact Greg at 701-548-8122 or 701-260-9665 for more information.

“SIMPLY, NORTH DAKOTA”

by Riley R. Schriefer

*It's the lonely winds that whip through the native grasses.
That bring music to our ears, and sights to our eyes,
That one can see for miles even without their glasses.
It's those miles of fences that keep the cattle in.
It takes leather palms and days to fix
Some say that's why the cowboys here are so thin.
It's the brisk mornings that bring the clear bawl of a newborn.
That drive each rancher and cowhand to get out of bed,
Every morning before breakfast to live the life they were sworn.*

*Because, each cowboy in his own heart makes an agreement with God.
To take care of His land, His animals, and His creation,
Even when it's 0 above and ground isn't close to thawed.
They say the people here are the nicest in the nation.
They will fix you breakfast, dinner, and supper,
Even if you don't hardly earn your ration.
Even though nice, the cowboys are hard to need be,
Because when it's white outside it's coldest here,
And we learn to drink it straight black, before it's coffee.
Each man lives to be old and has clearly earned each dimple.
Because he was wise enough to know and look back upon his smiles,
When he chose a North Dakota life one of morals and is really, pretty simple.
You can only find enjoyment if you see the simple small things put in front of you.
North Dakota is full of them, and if you just look,
You might find a few.*



TERMS & CONDITIONS

Except for those stated in the terms and conditions below, there are no warranties, either expressed or implied, as to the merchantability or fitness for a particular purpose with respect to the cattle being sold at this auction. The warranties and guarantees set forth in the "Terms and Conditions" are in lieu of all other warranties, either expressed or implied, and the remedies provided therein shall be the sole and exclusive remedy for the Buyer, or any party claiming through Buyer, for any breach of warranty or guarantee therein provided, and all other obligations or liabilities.

All cattle in this sale are offered according to the laws of the State wherein the sale is conducted. The right to bid, as provided under law, is reserved for all sellers unless otherwise announced.

BIDDING

The Auctioneer in charge will settle any disputes as to bids, and his decision on such matters shall be final.

TERMS

Terms of sale are cash unless satisfactory credit arrangements have been made with Sale Management prior to sale.

PURCHASER'S RISK

Each animal becomes the risk of the Buyer as soon as sold, but it shall be the obligation of the Seller to see that animals are fed and cared for free of charge to Buyer, until loaded for shipment or until the expiration of 48 hours after the sale, whichever occurs sooner.

CERTIFICATE OF REGISTRY

A transferred certificate of registry will be furnished to the Buyer for each animal.

HEALTH

All animals are eligible for interstate shipment, except as otherwise announced. Interstate health papers will be furnished for each animal requiring tuberculosis and brucellosis tests in accordance with Federal Regulations.

A.I./NON-OWNER BULL PERMITS

If a female is bred to a non-owned bull, a Non-Owner Bull Permit will be required for registration of the resulting calf and will be the responsibility of the individual submitting the application for registration unless otherwise specified between the Buyer and Seller.

ANNOUNCEMENTS

Any changes from information of any kind in the sale catalog or related materials will be announced from the auction block and such announcements shall take precedence.

BREEDING GUARANTEE

The nature and extent of the Breeding Guarantee is set forth in section 10 of these Sale Terms and Conditions.

All animals are guaranteed by the Seller to be breeders, with the exception of:

- Calves under 12 months of age.
- Animals entered in any show after purchase
- Gross negligence or willful misconduct on the part of Buyer, in the care and treatment of the animal.

Bulls are guaranteed breeders if not allowed to run within the herd until at least 14 months of age. Any bull that satisfies one or more of the following conditions shall be considered a breeder:

- Settles one-third or more of the healthy cows he serves.
- Is the sire of 20 or more animals.
- Settles cows by natural service and passes a fertility test made by a competent veterinarian during any six-month period of trial (provided for in section 10b of "Options and Privileges of Return or Adjustment," this section) shall be considered a breeder.

There is no guarantee with respect to the ability to freeze semen unless negotiated in a separate agreement between Buyer and Seller.

Safe-in-Calf Females have been examined by a competent veterinarian and are so guaranteed.

Served Females are believed to be in calf but are not so guaranteed.

Pasture-bred Females have been exposed but are not guaranteed to be in calf.

Open Females have not been served and are so guaranteed.

IDENTIFICATION

Seller offers each animal with readable tattoos corresponding to its registration.

OPTIONS AND PRIVILEGES OF RETURN OR ADJUSTMENT

All claims for adjustment or refund must be made in writing either within six months of the sale date or not later than six months after the animal reaches 18 months of age, with the exception of claims involving defects or parentage.

In the event an animal is claimed to be a non-breeder, the animal may be returned to the farm/ranch of the Seller if in good condition and complying with the health requirements of the Seller's state. The Seller shall be entitled to six months trial following the return of the animal in which to prove the animal is a breeder. If at the end of six months the Seller is unable to prove the animal is a breeder, the Seller, at the option of the Buyer, shall replace the animal with another of equal value or refund the purchase price. The return of the full purchase price shall in any case be deemed full satisfaction and settlement. Any expenses incurred for transporting an animal claimed to be a non-breeder shall be the responsibility of the Buyer; except that the Seller shall be responsible for transportation cost in the excess of the distance between the Buyer's farm/ranch and the location where the sale took place. If the Seller proves the animal to be a breeder, it shall be the obligation of the Buyer to take delivery of the animal and pay all expenses incurred for transportation.

If a female sold as "safe in calf" proves not to be in-calf, the Buyer may receive service from the bull previously used. If the bull is not available, the Seller shall be obligated to make a satisfactory adjustment on the purchase price upon return of the animal to the farm/ranch of the Seller. Any adjustment provided for herein shall absolve the Seller from further liability, except in case such female proves to be a non-breeder. If a female represented as "safe in calf" at time of sale to a certain bull proves to have been bred to a different bull, the Seller shall be obligated to make a satisfactory adjustment on the purchase price upon return of the animal to the farm of the Seller (adjustments shall not be considered to be a breeding fee or an allocation of the purchase price to any unborn calf). Any expense incurred for transportation shall be the responsibility of the Buyer, except that the Seller shall be responsible for transportation costs in excess of the distance between the Buyer's farm/ranch and the location where the sale took place.

If a female sold as "served" proves not to be in calf, or if a female sold as "pasture-bred" proves not to be in calf, the Seller only guarantees such female to be a breeder.

If a female sold as "open" proves to be with calf, the Buyer may return the animal to the farm/ranch of the Seller prior to calving for a refund of the full purchase price or for replacement with another animal of equal value, whichever is acceptable to the Buyer. It shall be the obligation of the Seller to bear any expense incurred for transportation.

DEFAULT

In the event the Buyer defaults on payment, the Buyer shall be responsible for all costs, including attorney's costs, incurred by Sale Management or Seller in connection with collecting, or attempting to collect, payment due.

GENETIC DEFECT AND PARENTAGE GUARANTEE

The parentage of all animals sold by the Seller is guaranteed to the extent that the animal is by the sire and out of the dam that is indicated on its registration papers.

All test results confirming an animal's genetic defect status must be disclosed to potential buyers prior to that animal's sale.

All cattle have met the RAAA requirements for registration as pertaining to genetic defects. In particular, animals containing a known genetic defect carrier in their two generation pedigree (parent or grandparent) without an intervening tested free animal have been tested for said genetic defect.

Refund of the animal's purchase price or replacement with an animal of equivalent value will be considered satisfactory settlement in the case of incorrect parentage or genetic defect information provided at the time of sale.

In no event will Seller be liable for any special, incidental, indirect, consequential (including without limitation; lost profits, lost value of progeny, embryos and/or semen, interruption of business), or punitive damages,

The Buyer will notify the Seller in writing immediately upon suspicion or verification that parentage or supplied genetic defect information is in error.

In cases of a returned animal: all expenses related to returning the animal to the Seller will be incurred by the Buyer, and the animal being returned must meet health requirements of the Seller's state.

SELLER'S SEMEN RIGHTS

Any semen rights retained by the Seller must be announced from the auction block at the time of the sale, if not already printed in the sale catalog.

RIGHTS AND OBLIGATIONS

The above terms and conditions of sale shall constitute a contract between the Buyer and Seller of each animal and shall be equally binding upon both. Each sale or resale of an animal constitutes a separate transaction.

Unless specifically stated herein, neither the Sale Management nor the Red Angus Association of America shall have any liability for any event or occurrence related in any manner to this sale.



Schriefer Red Angus
7000 County 26
Golden Valley, ND 58541

RETURN SERVICE REQUESTED

PRESORTED
FIRST CLASS
US POSTAGE
PAID
PERMIT #20
DICKINSON, ND

Please Bring This Catalog To The Sale

POWER, PERFORMANCE, PREDICTABILITY — RED ANGUS

Annual Production Sale

**WEDNESDAY,
FEBRUARY 26, 2014**

1 p.m. MST • Stockmen's Livestock
Dickinson, ND

Selling:

- 26** Registered Red Angus Open Heifers
- 125** Commercial Red Angus Open Heifers
- 20** 2-Year-Old Red Angus Bulls
- 40** Yearling Red Angus Bulls

Commercial and Registered Heifers Sell First!

